



ACF PD3500 *FLEXI FLO* COVERED HOPPER

Thank you for purchasing the American Car & Foundry PD3500 "Flexi Flo" covered hopper from Rapido Trains Inc. Please note that the minimum radius for these cars is 9 3/4 inches. Be sure to give your model a quick inspection to ensure that the couplers are working correctly and the wheels are in gauge before putting it on your layout.

PROTOTYPE HISTORY

Built between August 1964 and June 1966 the American Car & Foundry (ACF) 3500 cu. ft. covered hopper was an early innovator in pressure differential unloading and a marketing masterclass thanks to the "Flexi Flo" tag coined by the car's biggest customer, the New York Central railroad.

Other than seven cars built for Shippers Car Line (SHPX), a subsidiary of ACF, the NYC was the only purchaser of the PD3500. They made up for it in quantities, with a total of 220 cars rolling off the Milton, Pennsylvania, production line over three subtly different batches.

Through the Penn Central years, plenty made it through with their full NYC paint continuing to be exposed to the elements with nothing more than reporting mark and number patches. The Conrail era meant many cars were repatched again, making them rolling billboards in north-eastern railroad history! Many others were fully repainted, with Conrail applying at least three different schemes.

By the 1980s and 1990s, most remaining cars would be transferred to Conrail's Merchants Despatch Transportation Co. (MDTX) subsidiary, and then the later sale of cars to NAHX (for Lafarge), gaining new full paint schemes and being seen throughout North America. By the 2000s, patchouts were the norm with a plethora of different reporting marks popping up and no part of the USA or Canada was off limits to seeing these unique cars continue to earn their keep.

Many cars were still in use well into the mid 2010s, only being ultimately retired due to rules regarding age of cars used in interchange service.

LIMITED WARRANTY

Rapido Trains Inc. will send you any parts found to be missing or defective on this freight car, provided they are available. This warranty does not cover any damage from shipping — including loose parts — that may occur after the car has left our warehouse. It also does not cover unexpected plunges to the train room floor. Please call 1 (855) LRC-6917 or email us at trains@rapidotrains.com

HELP AND SUPPORT

Please contact us if you have any problems with your freight car. Also please visit the Product Support section of our web site, as we often address common issues. The Product Support section of our web site also includes an exploded diagram of your car.

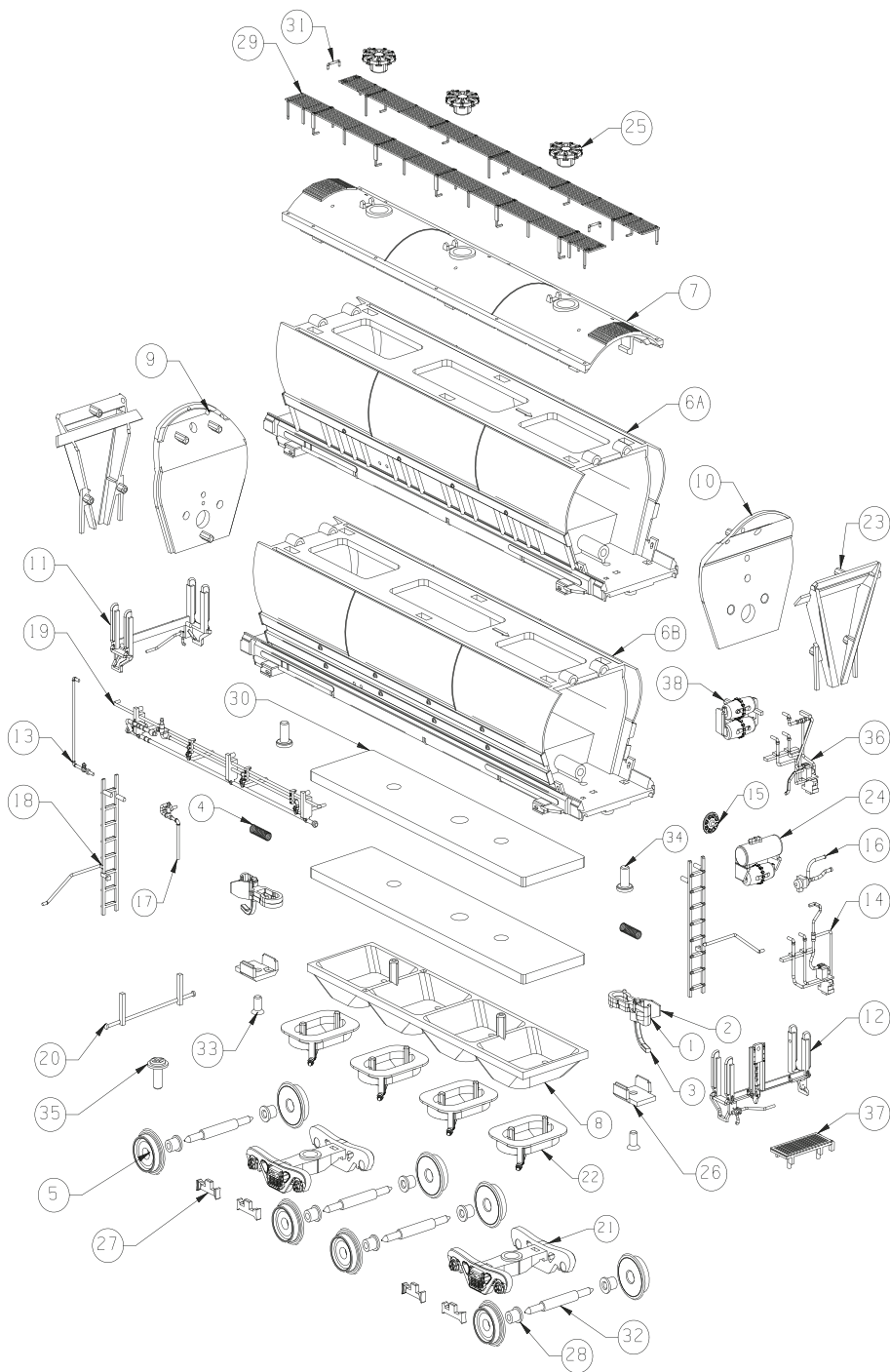
KEEP IN TOUCH

Please visit our web site and click on the link to sign up for our newsletter. That way you will not miss a single new release from Rapido, and we also give you behind-the-scenes information about the world of model railroading. You can also check us out on Facebook and see what we've been up to on our YouTube channel.



www.rapidotrains.com
facebook.com/rapidotrains
youtube.com/rapidotrains

PD3500 FLEXI FLO COVERED HOPPER



38	N533-04-07	3
37	N533-03-11	1
36	N533-03-05	1
35	SCREW 1.4X5 PWB	1
34	SCREW 1.4X3 CB	2
33	SCREW 1.2 X 2.5 KB	2
32	N533-MT005	4
31	N533-MT004	2
30	N533-MT002	2
29	N533-MT001	2
28	N533-04-10	8
27	N533-04-09	4
26	N533-04-08	2
25	N533-04-07	3
24	N533-04-04	1
23	N533-04-03	2
22	N533-04-02	4
21	N533-04-01	2
20	N533-03-14	1
19	N533-03-13	1
18	N533-03-12	2
17	N533-03-11	1
16	N533-03-08	1
15	N533-03-07	1
14	N533-03-05	1
13	N533-03-04	1
12	N533-03-02	1
11	N533-03-01	1
10	N533-02-04	1
9	N533-02-03	1
8	N533-02-02	1
7	N533-02-01	1
6B	N533-01-02	1
6A	N533-01-01	1
5	N506-MT001	8
4	GF-MT005	2
3	GF-MT004	2
2	GF-05-02	2
1	GF-05-01	2
PC NO	PART NAME	QTY

EFFORTS HAVE BEEN MADE TO ILLUSTRATE ALL PARTS FOUND ON THIS MODEL. A DIGITAL VERSION OF THIS DOCUMENT IS AVAILABLE FOR DOWNLOAD AT RAPIDOTRAINS.COM. SHOULD YOU NOT BE ABLE TO LOCATE A SPECIFIC PART, PLEASE CONTACT US FOR ASSISTANCE.