

PULLMAN-STANDARD

NEW HAVEN 8600-SERIES COACHES

Thank you for purchasing this super-detailed Pullman-Standard New Haven 8600-series Lightweight Coach from Rapido Trains Inc. Please note that the minimum designed radius for these cars is 11 inches.

“EASY-PEASY” LIGHTING

Our cars are equipped with “Easy-Peasy” battery-powered interior lighting. This means no drain on your power pack and the ability to turn the lighting on and off.

HOW IT WORKS:

The lights are turned on and off with the Rapido Lighter, a magnetic wand included with your passenger car. To turn the lights on, wave the magnetic tip once over the switch hidden in the car roof. To turn the lights off, wave it again. Remember to install the batteries first.

TURN THE LIGHTS OFF WHEN NOT IN USE:

The batteries have a limited life and should only be used for “night-time” operation. To save on replacement battery costs, remember to turn off the lights in daylight and when the cars are not being used. Like the real thing, these passenger cars don’t have Head End Power!

INSTALLING THE BATTERIES:

To install the batteries, you must first remove the shell. Spread the sides of the shell apart and gently tug on one of the trucks to dislodge the floor. It is a tight fit and it can be tricky. We had to make it a tight fit for operational reliability.

If you are having trouble removing the shell, we recommend using some old business cards. Pry open one side, and shove in a couple of business cards to stop the latches from engaging. Then pry open the other side and let the chassis fall out.

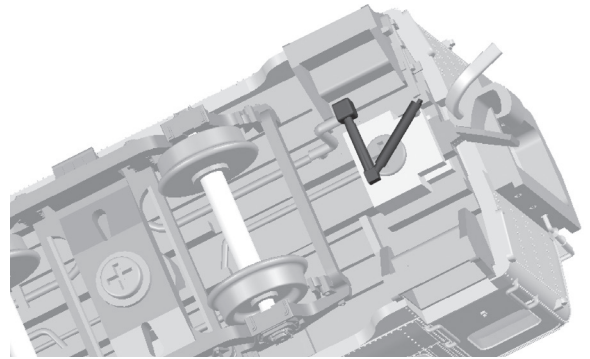
We considered making the roof removable but we felt that the seam would be too visible.

You will see the battery holders attached to the printed circuit board. Push the batteries into their holders, with the positive side (+) facing down, towards the interior of the car

If replacing old batteries, push them out with a bamboo skewer or something similar and replace them with LR41 or compatible batteries. As we can’t control the quality of replacement batteries that you purchase, your warranty does not cover damage caused by cheap replacement batteries venting goo all over your circuit board. Please use good quality batteries.

STEAM CONNECTORS

The little “V” shaped pieces of plastic are steam connectors. These need to be installed beneath the coupler boxes at each end of the steam line. See the drawing below.



Use CA or “Super Glue” to install the steam connectors. Styrene cement won’t work very well due to the nature of the plastic. (We may decide at the last minute to install these at the factory. If we did, ignore this whole section!)

FOULING ON CURVES AND CROSSOVERS

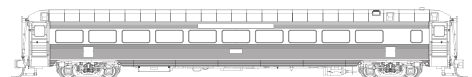
Your model comes equipped with standard-shank couplers to give a “close coupled” appearance. This may cause the diaphragms to foul on tighter curves or crossovers. If you find that the cars are derailing in these situations, replace the coupler on one end with a Micro-Trains 1016 Medium-shank coupler (not included).

LIMITED WARRANTY

Rapido Trains Inc. will replace any parts found to be missing or defective in this passenger car, provided they are available. This warranty does not cover any damage from shipping – including loose parts – that may occur after the car has left our warehouse. It also does not cover unexpected plunges to the train room floor. Please call 1 (855) LRC-6917 or email us at trains@rapidotrains.com

HELP AND SUPPORT

Please contact us if you have any problems with your 8600-series coach. Also please visit the Support section of our web site, as we often add addenda to our instructions and solutions to common issues. It also includes a copy of these instructions that can be enlarged on your screen, in case this writing is too small for you to read! Of course, if that is the case then including this bit of info is probably moot.

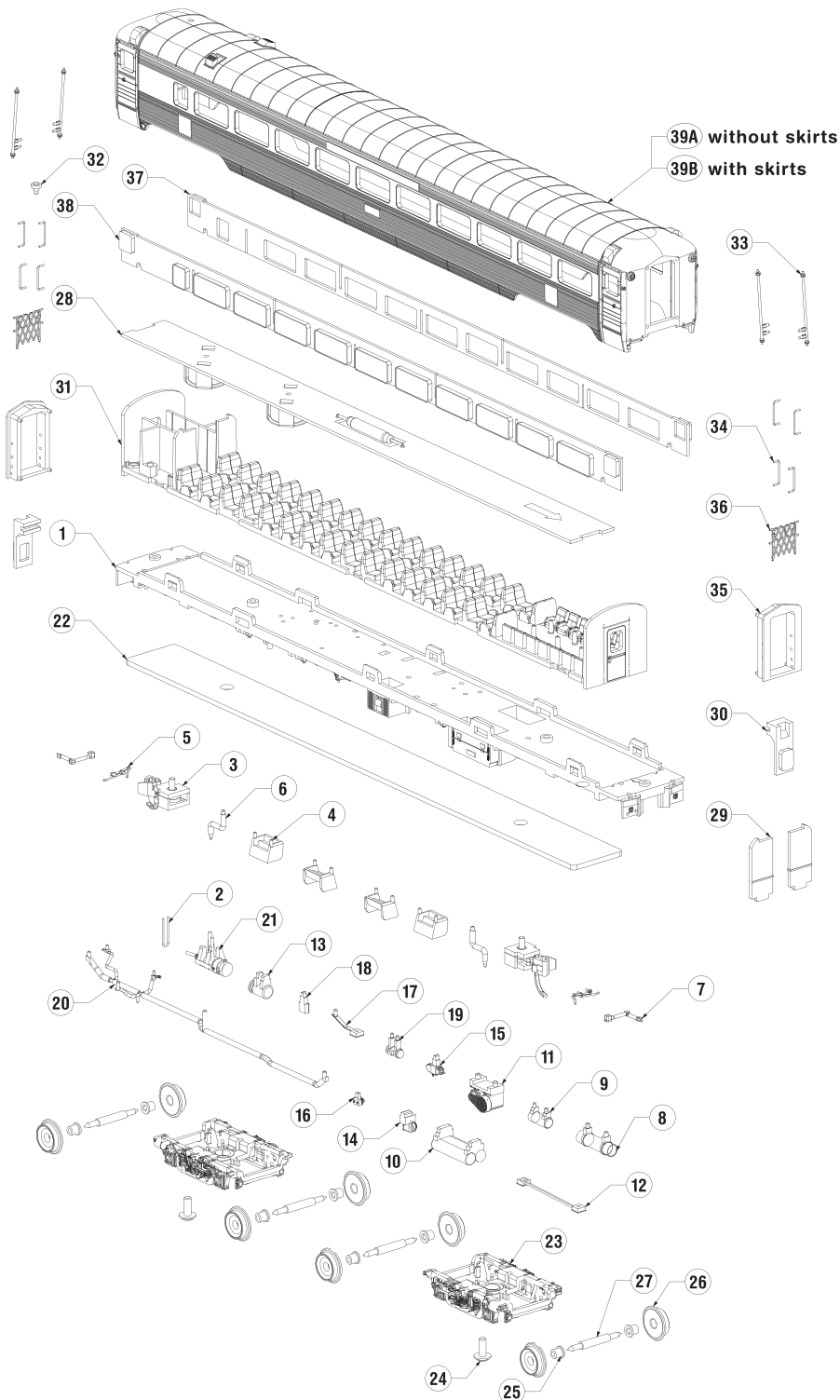


CANADA: 500 ALDEN ROAD, UNIT 21 • MARKHAM, ONTARIO • L3R 5H5
USA: PO BOX 796 • HIGGANUM • CONNECTICUT • 06441
Tel. 1-855-LRC-6917 • Fax. 1-905-474-3325 • Email. trains@rapidotrains.com

RAPIDO

PULLMAN-STANDARD

NEW HAVEN 8600-SERIES COACHES



39A	N517-01-01	1
39B	N517-01-02	1
38	N517-03-02	1
37	N517-03-01	1
36	N517-MT003	2
35	N517-04-02	2
34	N517-MT001	8
33	N517-05-04	4
32	N517-04-15	1
31	N517-02-02	1
30	N517-03-04	2
29	N517-03-03	2
28	N509-PCB01	1
27	521-MT002	4
26	N506-MT001	8
25	N517-05-08	8
24	SCREW 1.4X4 PWB	2
23	N517-04-01	2
22	N509-MT002	1
21	N517-05-09	1
20	N517-05-01	1
19	N517-04-10	1
18	N517-04-13	1
17	N517-05-03	1
16	N517-04-14	1
15	N517-04-11	1
14	N517-04-12	1
13	N517-04-07	1
12	N517-05-02	1
11	N517-04-08	1
10	N517-04-05	1
9	N517-04-09	1
8	N517-04-06	1
7	N517-05-06	2
6	N517-05-05	2
5	N517-05-07	2
4	N517-04-04	4
3	SCREW 1.1 X 5.5 KB	2
2	N517-MT002	1
1	N517-02-01	1
PC NO	PART NAME	QTY



CANADA: 500 ALDEN ROAD, UNIT 21 • MARKHAM, ONTARIO • L3R 5H5
 USA: PO BOX 796 • HIGGANUM • CONNECTICUT • 06441
 Tel. 1-855-LRC-6917 • Fax. 1-905-474-3325 • Email. trains@rapidotrains.com

RAPIDO