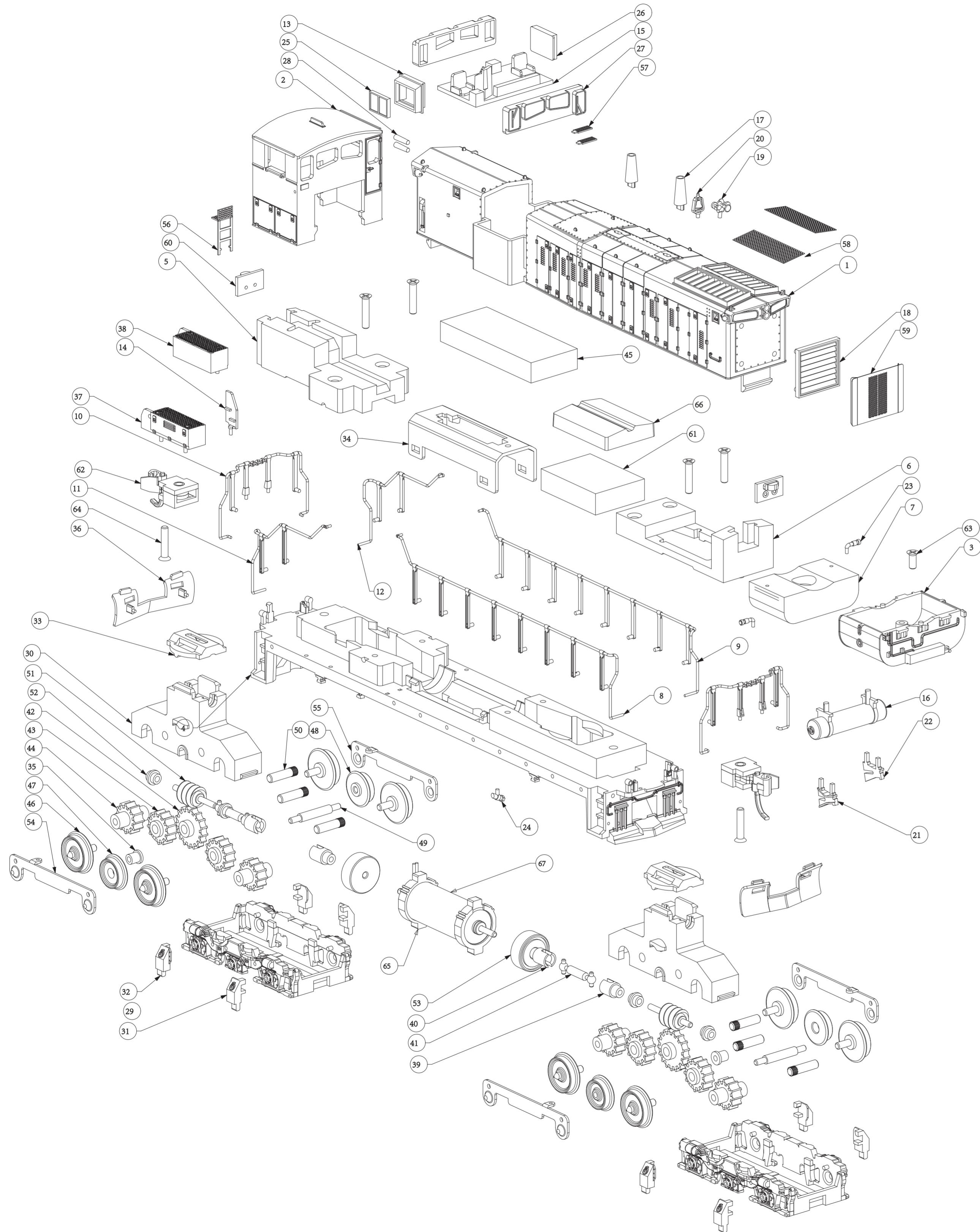


N GMD-1 1600 BOM



67	MOTOR ARC716	1	34	7-07-08	1
66	7-06-21	1	33	7-07-06	2
65	7-06-20	2	32	7-07-04	4
64	SCREW 1.2X6 KM	6	31	7-07-03	4
63	SCREW 1.2X3 KB	1	30	7-07-02	2
62	MICRO TRAINS COUPLER	2	29	7-07-01	2
61	7-SPEAKER	1	28	7-06-19	4
60	7-PCB02	2	27	7-06-18	2
59	7-MT015	1	26	7-06-17	1
58	7-MT014	2	25	7-06-16	1
57	7-MT012	2	24	7-06-15	1
56	7-MT011	1	23	7-06-14	2
55	7-MT010	2	22	7-06-13	1
54	7-MT009	2	21	7-06-12	1
53	7-MT008	2	20	7-06-11	1
52	7-MT007	4	19	7-06-10	1
51	7-MT006	2	18	7-06-08	1
50	7-MT005	6	17	7-06-06	2
49	7-MT004	2	16	7-06-05	1
48	7-MT003	2	15	7-06-04	1
47	7-MT002	2	14	7-06-03	1
46	7-MT001	8	13	7-06-02	1
45	7-DCC	1	12	7-05-08	1
44	7-08-03	4	11	7-05-07	1
43	7-08-02	4	10	7-05-06	2
42	7-08-01	2	9	7-05-02	1
41	7-07-17	2	8	7-05-01	1
40	7-07-16	2	7	7-04-03	1
39	7-07-15	2	6	7-04-02	1
38	7-07-12	1	5	7-04-01	1
37	7-07-11	1	4	7-03-02	1
36	7-07-10	2	3	7-02-02	1
35	7-07-09	2	2	7-02-01	1
			1	7-01-02	1
PC NO	PART NAME	QTY	PC NO	PART NAME	QTY