

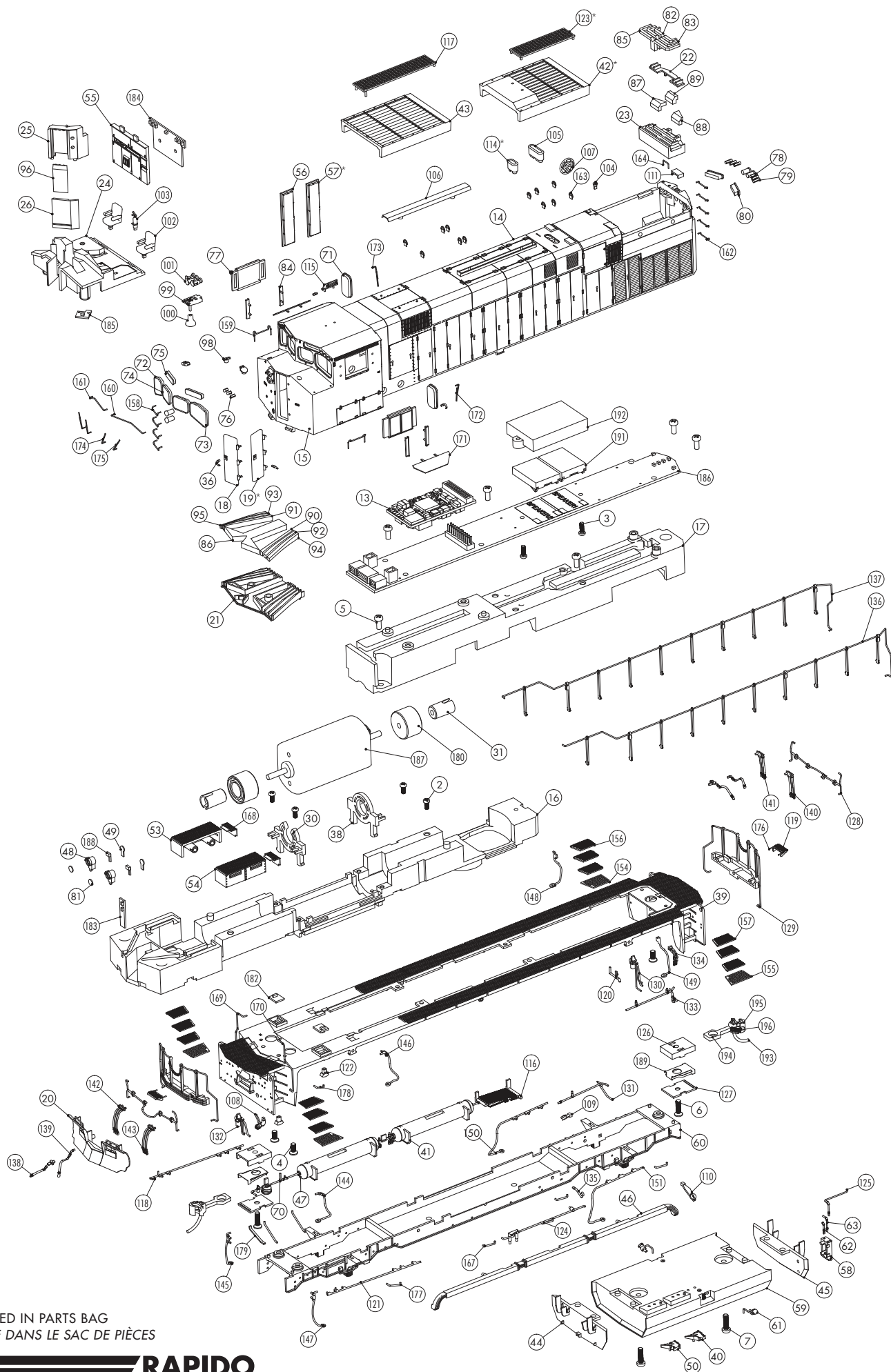
L'ÉCHELLE HO SCALE

MONTREAL LOCOMOTIVE WORKS

M420 MR-20b MR-20c

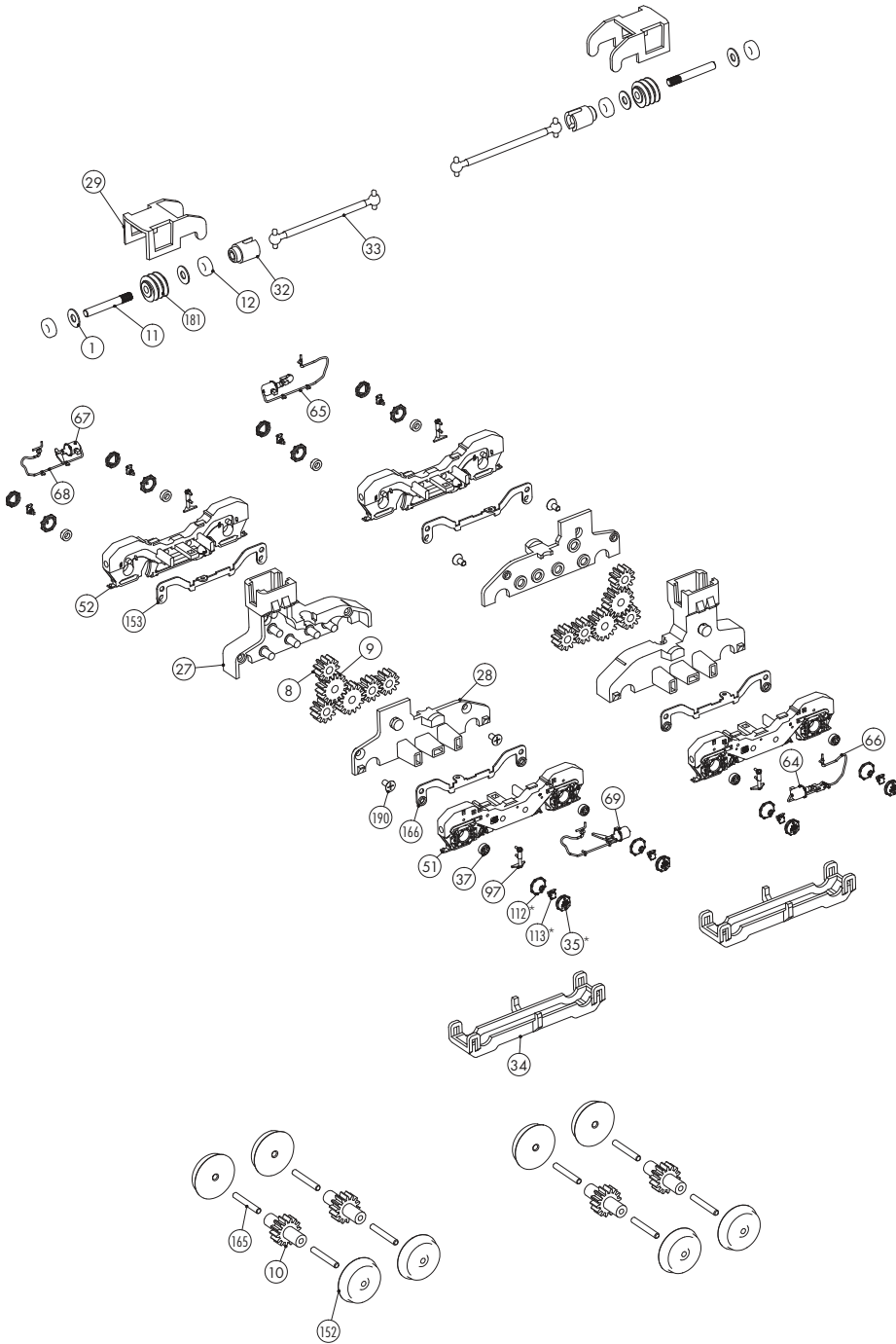
ESU LOKSOUND EST. 1999

RAPIDO
TRAINS INC.



* DETAIL PART LOCATED IN PARTS BAG
* DÉTAIL PIÈCE SITUÉE DANS LE SAC DE PIÈCES

RAPIDO



196	YYMX-HCP04	2
195	YYMX-HCP03	2
194	YYMX-HCP02	2
193	YYMX-HCP01	2
192	YY-01-01	1
191	SPEAKER	2
190	SCREW 1430KB	4
189	RTR301-MT001	2
188	R1-PCB1	2
187	MOTOR	1
186	M420-PCB05	1
185	M420-PCB04	1
184	M420-PCB03	1
183	M420-PCB02	1
182	M420-PCB01	2
181	M420-MT032	2
180	M420-MT031	2
179	M420-MT030	1
178	M420-MT029	1
177	M420-MT028	1
176	M420-MT027	2
175	M420-MT026	2
174	M420-MT025	2
173	M420-MT024	1
172	M420-MT023	1
171	M420-MT022	2
170	M420-MT021	1
169	M420-MT020	1
168	M420-MT017	2
167	M420-MT016	7
166	M420-MT015	2
165	M420-MT014	8
164	M420-MT013	1
163	M420-MT012	12
162	M420-MT011	5
161	M420-MT010	1
160	M420-MT009	1
159	M420-MT008	2
158	M420-MT007	4
157	M420-MT006	6
156	M420-MT005	6
155	M420-MT004	2
154	M420-MT003	2
153	M420-MT002	2
152	M420-MT001	8
151	M420-16-14	1
150	M420-16-13	1
149	M420-16-12	1
148	M420-16-11	1
147	M420-16-10	1
146	M420-16-09	1
145	M420-16-08	1
144	M420-16-07	1
143	M420-16-06	1
142	M420-16-05	1
141	M420-16-04	1
140	M420-16-03	1
139	M420-16-02	2
138	M420-16-01	2
137	M420-15-02	1
136	M420-15-01	1
135	M420-14-08	1
134	M420-14-07	1
133	M420-14-06	1
132	M420-14-05	1
131	M420-14-04	1
130	M420-14-03	1
129	M420-14-02	2
128	M420-14-01	2
127	M420-13-13	2
126	M420-13-12	2
125	M420-13-11	1
124	M420-13-10	1
123*	M420-13-09	1
122	M420-13-08	2
121	M420-13-07	1
120	M420-13-06	1
119	M420-13-05	2
118	M420-13-04	1
117	M420-13-03	1
116	M420-13-02	1
115	M420-13-01	1
114*	M420-12-18	1
113*	M420-12-17	8
112*	M420-12-16	8
111	M420-12-15	1
110	M420-12-14	1
109	M420-12-13	1
108	M420-12-12	1
107	M420-12-11	1
106	M420-12-10	1
105	M420-12-09	1
104	M420-12-08	1
103	M420-12-07	1
102	M420-12-06	2
101	M420-12-05	1

100	M420-12-04	1
99	M420-12-03	1
98	M420-12-02	2
97	M420-12-01	4
96	M420-11-26	1
95	M420-11-25	1
94	M420-11-24	1
93	M420-11-23	1
92	M420-11-22	1
91	M420-11-21	1
90	M420-11-20	1
89	M420-11-19	1
88	M420-11-18	1
87	M420-11-17	1
86	M420-11-16	1
85	M420-11-15	1
84	M420-11-14	4
83	M420-11-13	1
82	M420-11-12	1
81	M420-11-11	2
80	M420-11-10	2
79	M420-11-09	6
78	M420-11-08	4
77	M420-11-07	2
76	M420-11-06	6
75	M420-11-05	2
74	M420-11-04	2
73	M420-11-03	1
72	M420-11-02	1
71	M420-11-01	2
70	M420-10-10	1
69	M420-10-09	1
68	M420-10-08	1
67	M420-10-07	2
66	M420-10-06	1
65	M420-10-05	1
64	M420-10-04	2
63	M420-10-03	1
62	M420-10-02	1
61	M420-10-01	2
60	M420-09-02	1
59	M420-09-01	1
58	M420-08-08	1
57*	M420-08-07	1
56	M420-08-06	1
55	M420-08-05	1
54	M420-08-04	1
53	M420-08-03	1
52	M420-08-02	2
51	M420-08-01	2
50	M420-07-11	1
49	M420-07-10	2
48	M420-07-09	2
47	M420-07-08	1
46	M420-07-07	1
45	M420-07-06	1
44	M420-07-05	1
43	M420-07-04	1
42	M420-07-03	1
41	M420-07-02	1
40	M420-07-01	1
39	M420-06-01	1
38	M420-05-12	1
37	M420-05-11	8
36	M420-05-10	4
35*	M420-05-09	8
34	M420-05-08	2
33	M420-05-07	2
32	M420-05-06	2
31	M420-05-05	2
30	M420-05-04	1
29	M420-05-03	2
28	M420-05-02	2
27	M420-05-01	2
26	M420-04-10	1
25	M420-04-09	1
24*	M420-04-08	1
23	M420-04-07	1
22	M420-04-06	1
21	M420-04-04	1
20	M420-04-03	1
19	M420-04-02	1
18	M420-04-01	1
17	M420-03-02	1
16	M420-03-01	1
15	M420-02-01	1
14	M420-01-01	1
13	KH01-HPCB-01	1
12	BEARING D205H1_5	4
11	26-M002	2
10	26-14-03	4
9	26-14-02	4
8	26-14-01	8
7	1-17060DPM	2
6	1-17060DFB	2
5	1-17040DPM	6
4	1-17040DFM	3
3	1-14040DFB	2
2	1-14030DPM	4
1	205003	4

* DETAIL PART LOCATED IN PARTS BAG

* DÉTAIL PIÈCE SITUÉE DANS LE SAC DE PIÈCES