

115	RS18-17-20	2
114	RS18-17-15	1
113	RS18-17-14	1
112	RS18-17-01	19
111	RS18-16-20	2
110	RS18-16-19	1
109	RS18-13-11	2
108	RS18-12-02	2
107	RS18-10-05	2
106	RS18-09-11	2
105	RS18-09-04	2
104	RS18-07-07	2
103	RS18-06-15	1
102	RS18-06-14	3
101	RS18-06-08	1
100	RS18-06-07	1
99	RS18-06-03	1
98	RS18-05-09	2
97	RS18-05-02	1
96	RS18-05-01	1
95	RS18-04-17	4
94	RS18-04-16	2
93	RS11-PCB-01	1
92	RS11-MT146	4
91	RS11-MT118	1
90	RS11-MT117	1
89	RS11-M115	1
88	RS11-M114	1
87	RS11-M113	1
86	RS11-M112	1
85	RS11-M111	1
84	RS11-M110	1
83	RS11-M057	2
82	RS11-36-01	1
81	RS11-35-02	1
80	RS11-34-03	1
79	RS11-34-02	1
78	RS11-34-01	1
77	RS11-33-01	1
76	RS11-31-08	2
75	RS11-31-02	2
74	RS11-31-01	22
73	RS11-30-12	1
72	RS11-30-10	1
71	RS11-30-06	1
70	RS11-30-05	1
69	RS11-30-04	1
68	RS11-29-03	1
67	RS11-26-03	2
66	RS11-26-02	1
65	RS11-26-01	1
64	RS11-25-25	2
63	RS11-25-02	1
62	RS11-22-13	2
61	RS11-22-12	2
60	RS11-22-03	2
59	RS11-22-01	1
58	RS11-21-05	1
57	RS11-20-14	2
56	RS11-20-13	2
55	RS11-18-04	1
54	RS11-17-10	1
53	RS11-17-07	1
52	RS11-17-05	4
51	RS11-14-06	1
50	RS11-12-06	2
49	RS11-09-17	2
48	RS11-09-16	2
47	RS11-07-11	2
46	RS11-07-08	2
45	RS11-07-03	1
44	RS11-06-19	1
43	RS11-06-17	1
42	RS11-05-20	1
41	RS11-05-16	1
40	RS11-05-11	1
39	RS11-05-10	1
38	RS11-04-08	2
37	RS11-04-07	4
36	RS11-04-06	4
35	R1-MT005	2
34	R1-MT004	2
33	R1-MT003	8
32	R1-MT002	8
31	R1-MT001	2
30	PM-1.2x30	4
29	MOTOR	1
28	DECODER	1
27	BEARING	4
26	21-06-07	6
25	21-06-01	4
24	2-MT004	4
23	2-MT001	4
22	2-10-03	4
21	2-10-02	4
20	2-10-01	4
19	2-07-10	4
18	2-07-09	2
17	2-07-08	2
16	2-07-07	4
15	2-07-06	2
14	2-07-05	2
13	2-07-04	4
12	2-06-04	2
11	2-06-03	2
10	2-06-02	2
9	2-06-01	2
8	1750	6
7	1740	4
6	1730	4
5	17050	2
4	1430	2
3	14040	4
2	1.7x4KB	1
1	1-14040DFB STP	4

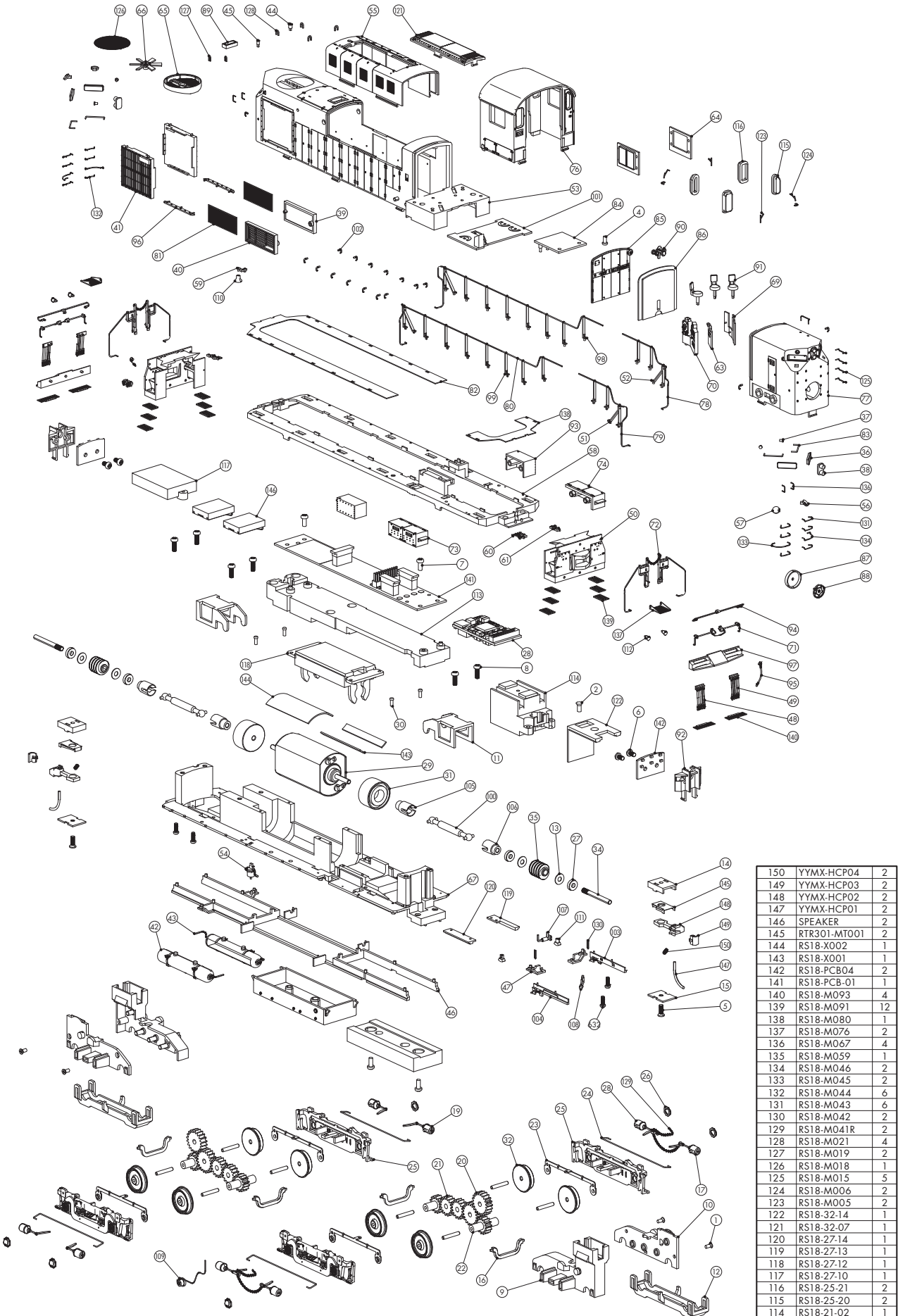
160	YYMX-HCP04	2
159	YYMX-HCP03	2
158	YYMX-HCP02	2
157	YYMX-HCP01	2
156	SPEAKER	2
155	RTR301-MT001	2
154	RS18-X002	1
153	RS18-X001	1
152	RS18-PCB04	2
151	RS18-PCB-07	1
150	RS18-PCB-03	2
149	RS18-PCB-01	1
148	RS18-M094	2
147	RS18-M093	4
146	RS18-M091	12
145	RS18-M067	4
144	RS18-M046	2
143	RS18-M045	2
142	RS18-M044	6
141	RS18-M043	6
140	RS18-M042	2
139	RS18-M041R	2
138	RS18-M021	4
137	RS18-M019	2
136	RS18-M018	1
135	RS18-M015	5
134	RS18-M006	2
133	RS18-M005	2
132	RS18-32-14	1
131	RS18-32-07	1
130	RS18-32-14	1
129	RS18-32-13	1
128	RS18-32-12	1
127	RS18-32-10	1
126	RS18-25-21	2
125	RS18-25-20	2
124	RS18-21-02	1
123	RS18-21-01	1
122	RS18-20-10	2
121	RS18-20-07	2
120	RS18-20-05	2
119	RS18-18-20	2
118	RS18-18-11	1
117	RS18-18-10	1
116	RS18-17-21	2

DUE TO THE MANY COMBINATIONS OF PARTS FOUND ON THE RS-11, THESE DRAWINGS REFLECT SOME OF THE MORE COMMON ARRANGEMENTS. A DIGITAL VERSION OF THIS DOCUMENT IS AVAILABLE FOR DOWNLOAD AT RAPIDOTRAINS.COM. SHOULD YOU NOT BE ABLE TO LOCATE A SPECIFIC PART, PLEASE CONTACT US FOR ASSISTANCE.

AMERICAN LOCOMOTIVE COMPANY RS-11 (DL-701)



31-8-MEC



110	RS18-20-02	1
109	RS18-18-20	1
108	RS18-18-11	1
107	RS18-18-10	1
106	RS18-17-21	2
105	RS18-17-20	2
104	RS18-17-15	1
103	RS18-17-14	1
102	RS18-17-01	19
101	RS18-16-19	1
100	RS18-13-11	2
99	RS18-13-08R	9
98	RS18-13-08L	9
97	RS18-12-02	2
96	RS18-10-05	2
95	RS18-09-11	2
94	RS18-09-04	2
93	RS18-08-16	1
92	RS18-07-07	2
91	RS18-06-14	3
90	RS18-06-12	1
89	RS18-06-07	1
88	RS18-06-03	1
87	RS18-06-02	1
86	RS18-05-02	1
85	RS18-05-01	1
84	RS11-PCB-01	1
83	RS11-MT134	4
82	RS11-MT116	1
81	RS11-M057	2
80	RS11-M052	1
79	RS11-M051	1
78	RS11-M050	1
77	RS11-36-03	1
76	RS11-35-03	1
75	RS11-34-04	1
74	RS11-34-02	1
73	RS11-34-01	1
72	RS11-31-07	2
71	RS11-31-02	2
70	RS11-30-12	1
69	RS11-30-10	1
68	RS11-29-05	1
67	RS11-26-03	1
66	RS11-26-02	1
65	RS11-26-01	1
64	RS11-25-25	2
63	RS11-25-02	1
62	RS11-24-02	1
61	RS11-23-13	2
60	RS11-23-12	2
59	RS11-23-06	1
58	RS11-22-01	1
57	RS11-20-14	2
56	RS11-20-13	2
55	RS11-19-03	1
54	RS11-17-11	1
53	RS11-14-05	1
52	RS11-13-07R	2
51	RS11-13-07L	2
50	RS11-12-06	2
49	RS11-09-17	2
48	RS11-09-16	2
47	RS11-07-11	2
46	RS11-07-03	1
45	RS11-06-19	1
44	RS11-06-17	1
43	RS11-05-20	1
42	RS11-05-16	1
41	RS11-05-14	2
40	RS11-05-11	1
39	RS11-05-10	1
38	RS11-04-08	2
37	RS11-04-07	4
36	RS11-04-06	4
35	R1-MT005	2
34	R1-MT004	2
33	R1-MT003	8
32	R1-MT002	8
31	R1-MT001	2
30	PM-1 2x30	4
29	MOTOR	1
28	DECODER	1
27	BEARING	4
26	21-06-07	6
25	21-06-01	4
24	2-MT004	4
23	2-MT001	4
22	2-10-03	4
21	2-10-02	4
20	2-10-01	4
19	2-07-10	4
18	2-07-09	2
17	2-07-08	2
16	2-07-07	4
15	2-07-06	2
14	2-07-05	2
13	2-07-04	4
12	2-06-04	2
11	2-06-03	2
10	2-06-02	2
9	2-06-01	2
8	1750	6
7	1740	4
6	1730	4
5	17050	2
4	1430	1
3	14040	4
2	1.7x4KB	1
1	1-14040DFB_STP	4

DUE TO THE MANY COMBINATIONS OF PARTS FOUND ON THE RS-11, THESE DRAWINGS REFLECT SOME OF THE MORE COMMON ARRANGEMENTS. A DIGITAL VERSION OF THIS DOCUMENT IS AVAILABLE FOR DOWNLOAD AT RAPIDOTRAINS.COM. SHOULD YOU NOT BE ABLE TO LOCATE A SPECIFIC PART, PLEASE CONTACT US FOR ASSISTANCE.

PC NO.	PART NAME	QTY	PC NO.	PART NAME	QTY
--------	-----------	-----	--------	-----------	-----