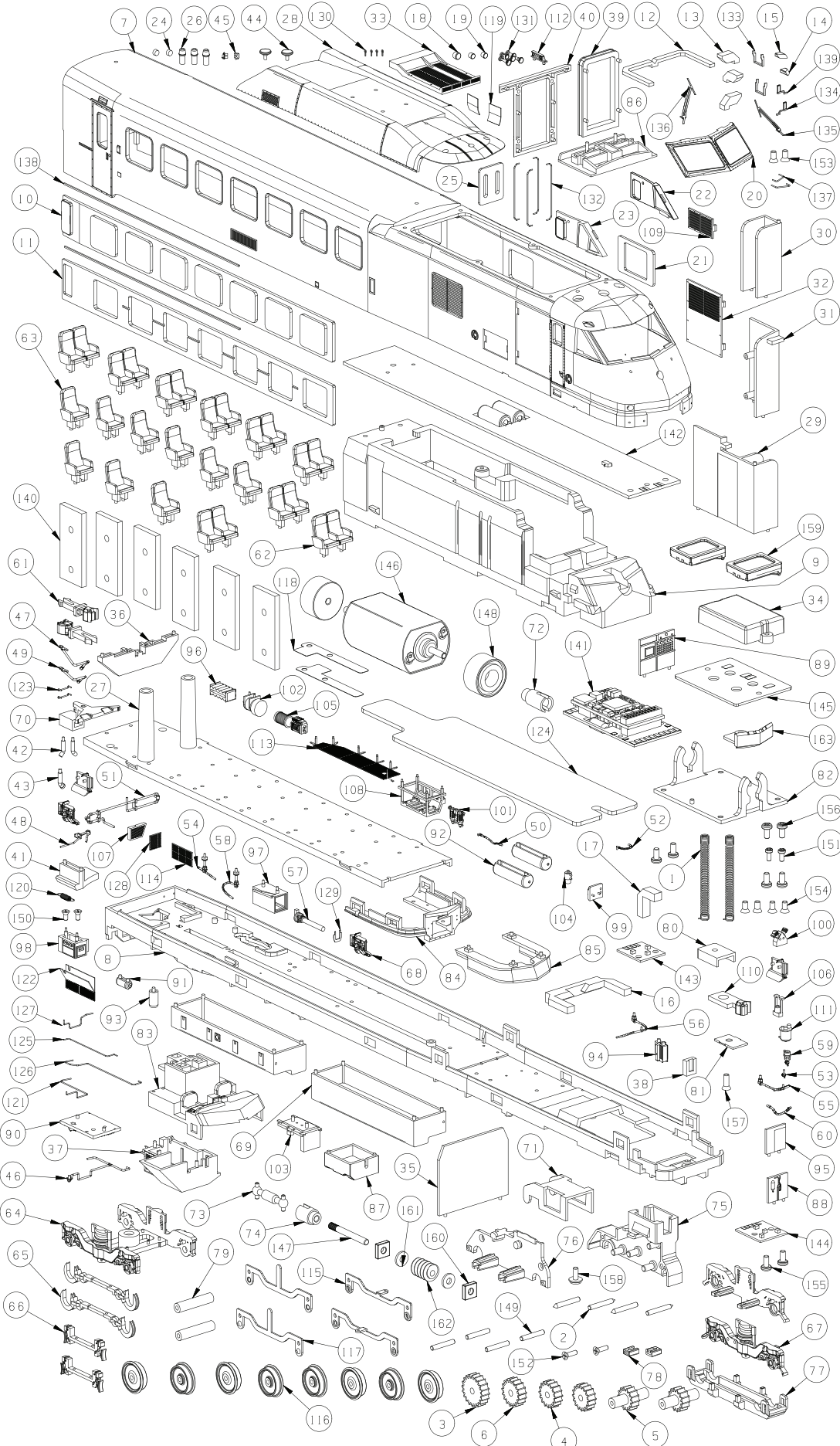


HO SCALE ROHR TURBOLINER POWER CLUB

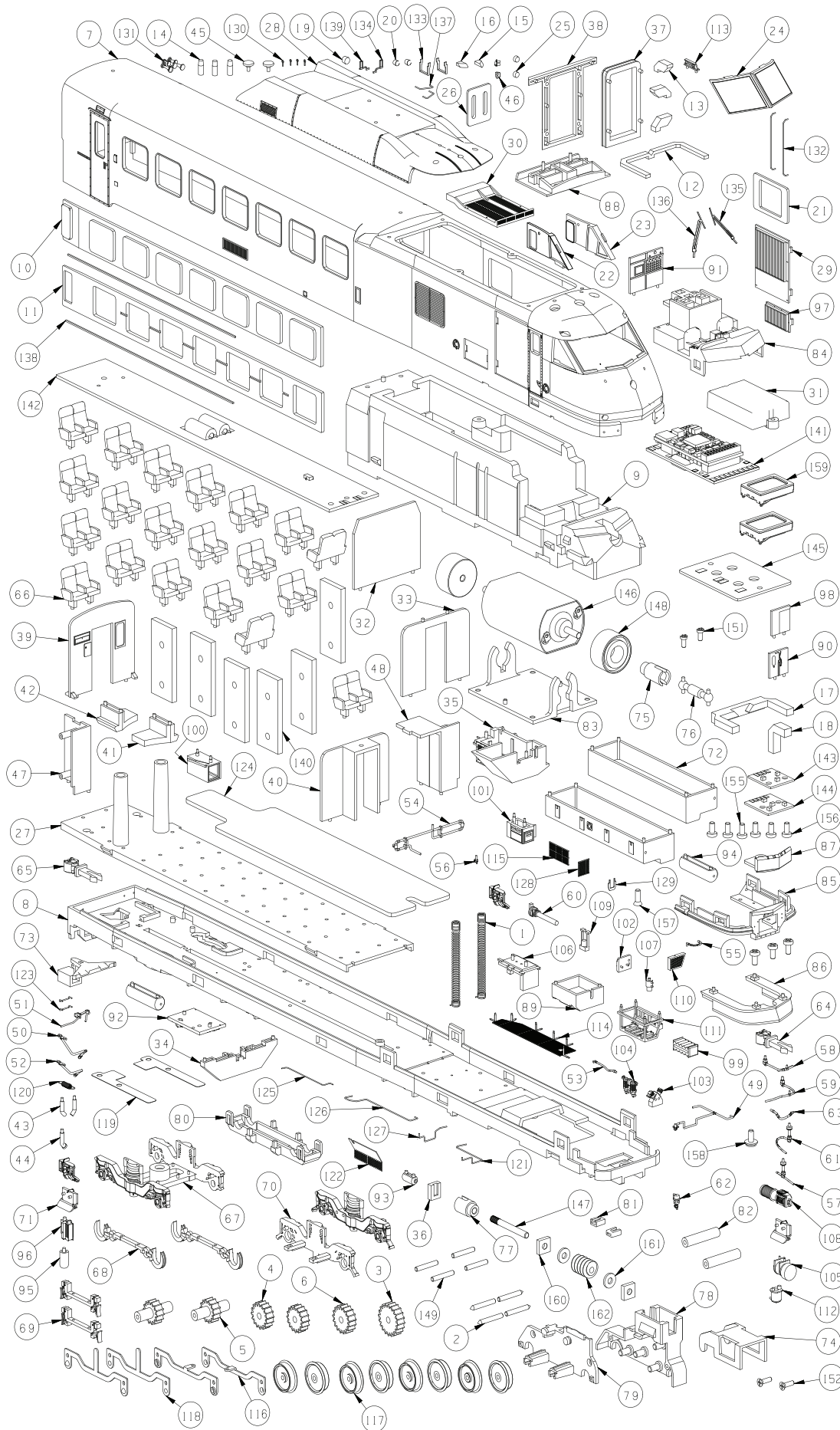
LOK SOUND
EST. 1999



163	25-14-04	1	83	25-14-01	1
162	WORM D6	1	82	25-13-12	1
161	WASHER 0.7MM	2	81	25-13-11	1
160	SQUARE BEARING D205H1.5	2	80	25-13-10	1
159	SPEAKER	2	79	25-13-09	2
158	SCREW 1.7X4 PMB	1	78	25-13-08	2
157	SCREW 1.7X4 KB	1	77	25-13-07	1
156	SCREW 1.7X3.5 PM	4	76	25-13-06	1
155	SCREW 1.7X3.5 PB	4	75	25-13-05	1
154	SCREW 1.7X3.5 KM	4	74	25-13-04	1
153	SCREW 1.7X3.5 KB	2	73	25-13-03	1
152	SCREW 1.4X4 4B	2	72	25-13-02	1
151	SCREW 1.4X3 PM	2	71	25-13-01	1
150	SCREW 1.4X3 KB	2	70	25-12-09	1
149	R1-MT003	4	69	25-12-06	2
148	R1-MT001	2	68	25-12-05	4
147	R1-MT004	1	67	25-12-04	2
146	MOTOR	1	66	25-12-03	2
145	25-PCB06	1	65	25-12-02	2
144	25-PCB05	1	64	25-12-01	1
143	25-PCB04	1	63	25-11-02	9
142	25-PCB02	1	62	25-11-01	9
141	25-PCB01	1	61	25-10-20	2
140	25-MT031	6	60	25-10-18	1
139	25-MT030	1	59	25-10-17	1
138	25-MT027	2	58	25-10-16	1
137	25-MT026	2	57	25-10-15	1
136	25-MT025	1	56	25-10-14	1
135	25-MT024	1	55	25-10-13	1
134	25-MT023	1	54	25-10-12	1
133	25-MT022	2	53	25-10-11	1
132	25-MT021	4	52	25-10-10	1
131	25-MT020	1	51	25-10-09	1
130	25-MT019	4	50	25-10-08	1
129	25-MT018	1	49	25-10-07	1
128	25-MT017	1	48	25-10-06	1
127	25-MT016	1	47	25-10-05	1
126	25-MT015	1	46	25-10-04	1
125	25-MT014	1	45	25-09-17	2
124	25-MT013	1	44	25-09-16	2
123	25-MT012	2	43	25-09-15	1
122	25-MT011	1	42	25-09-14	2
121	25-MT010	1	41	25-09-13	1
120	25-MT008	1	40	25-09-09	1
119	25-MT007	2	39	25-09-08	1
118	25-MT006	2	38	25-09-07	1
117	25-MT005	2	37	25-09-06	1
116	25-MT004	8	36	25-09-05	1
115	25-MT003	2	35	25-08-11	1
114	25-MT002	1	34	25-08-10	1
113	25-MT001	1	33	25-08-09	1
112	25-15-17	1	32	25-08-08	1
111	25-15-16	1	31	25-08-06	1
110	25-15-15	1	30	25-08-05	1
109	25-15-14	1	29	25-08-04	1
108	25-15-13	1	28	25-08-01	1
107	25-15-12	1	27	25-07-04	1
106	25-15-11	1	26	25-06-19	3
105	25-15-10	1	25	25-06-18	1
104	25-15-09	1	24	25-06-17	2
103	25-15-08	1	23	25-06-15	1
102	25-15-07	1	22	25-06-14	1
101	25-15-06	1	21	25-06-13	1
100	25-15-05	1	20	25-06-12	1
99	25-15-04	1	19	25-06-11	2
98	25-15-03	1	18	25-06-10	1
97	25-15-02	1	17	25-06-09	1
96	25-15-01	1	16	25-06-08	1
95	25-14-17	1	15	25-06-07	1
94	25-14-15	1	14	25-06-06	1
93	25-14-14	1	13	25-06-04	3
92	25-14-13	2	12	25-06-03	1
91	25-14-12	1	11	25-06-02	1
90	25-14-10	1	10	25-06-01	1
89	25-14-08	1	9	25-04-01	1
88	25-14-07	1	8	25-03-01	1
87	25-14-06	1	7	25-01-01	1
86	25-14-05	1	6	2-10-04	1
85	25-14-03	1	5	2-10-03	2
84	25-14-02	1	4	2-10-02	2
83	25-14-01	1	3	2-10-01	1
			2	17-MT014	4
			1	124-MT013	2

EFFORTS HAVE BEEN MADE TO ILLUSTRATE ALL PARTS FOUND ON THIS MODEL.
A DIGITAL VERSION OF THIS DOCUMENT IS AVAILABLE FOR DOWNLOAD AT RAPIDOTRAINS.COM.
SHOULD YOU NOT BE ABLE TO LOCATE A SPECIFIC PART, PLEASE CONTACT US FOR ASSISTANCE.

HO SCALE ROHR TURBOLINER POWER COACH



162	WORM D6	1	82	25-13-09	2
161	WASHER 0.7MM	2	81	25-13-08	2
160	SQUARE BEARING D20SH1.5	2	80	25-13-07	1
159	SPEAKER	2	79	25-13-06	1
158	SCREEN 1.7X4 PWB	1	78	25-13-05	1
157	SCREEN 1.7X4 KB	1	77	25-13-04	1
156	SCREEN 1.7X35 PM	4	76	25-13-03	1
155	SCREEN 1.7X35 PB	5	75	25-13-02	1
154	SCREEN 1.7X35 KM	4	74	25-13-01	1
153	SCREEN 1.7X35 KB	2	73	25-12-09	1
152	SCREEN 1.4X4 KB	2	72	25-12-08	2
151	SCREEN 1.4X3 PW	2	71	25-12-05	4
150	SCREEN 1.4X3 KB	2	70	25-12-04	2
149	R1-MT003	4	69	25-12-03	2
148	R1-MT001	2	68	25-12-02	2
147	R1-MT004	1	67	25-12-01	1
146	MOTOR	1	66	25-11-01	20
145	25-PCB06	1	65	25-10-20	1
144	25-PCB05	1	64	25-10-19	1
143	25-PCB04	1	63	25-10-18	1
142	25-PCB02	1	62	25-10-17	1
141	25-PCB01	1	61	25-10-16	1
140	25-MT031	6	60	25-10-15	1
139	25-MT030	1	59	25-10-14	1
138	25-MT027	2	58	25-10-13	1
137	25-MT026	2	57	25-10-12	1
136	25-MT025	1	56	25-10-11	1
135	25-MT024	1	55	25-10-10	1
134	25-MT023	1	54	25-10-09	1
133	25-MT022	2	53	25-10-08	1
132	25-MT021	4	52	25-10-07	1
131	25-MT020	1	51	25-10-06	1
130	25-MT019	4	50	25-10-05	1
129	25-MT018	1	49	25-10-04	1
128	25-MT017	1	48	25-09-19	1
127	25-MT016	1	47	25-09-18	1
126	25-MT015	1	46	25-09-17	2
125	25-MT014	1	45	25-09-16	2
124	25-MT013	1	44	25-09-15	1
123	25-MT012	2	43	25-09-14	2
122	25-MT011	1	42	25-09-13	1
121	25-MT010	1	41	25-09-12	1
120	25-MT008	1	40	25-09-11	1
119	25-MT006	2	39	25-09-10	1
118	25-MT005	2	38	25-09-09	1
117	25-MT004	8	37	25-09-08	1
116	25-MT003	2	36	25-09-07	1
115	25-MT002	1	35	25-09-06	1
114	25-MT001	1	34	25-09-05	1
113	25-15-17	1	33	25-09-03	1
112	25-15-16	1	32	25-08-11	1
111	25-15-13	1	31	25-08-10	1
110	25-15-12	1	30	25-08-09	1
109	25-15-11	1	29	25-08-07	1
108	25-15-10	1	28	25-08-01	1
107	25-15-09	1	27	25-07-03	1
106	25-15-08	1	26	25-06-18	1
105	25-15-07	1	25	25-06-17	2
104	25-15-06	1	24	25-06-16	1
103	25-15-05	1	23	25-06-15	1
102	25-15-04	1	22	25-06-14	1
101	25-15-03	1	21	25-06-13	1
100	25-15-02	1	20	25-06-11	2
99	25-15-01	1	19	25-06-10	1
98	25-14-17	1	18	25-06-09	1
97	25-14-16	1	17	25-06-08	1
96	25-14-15	1	16	25-06-07	1
95	25-14-14	1	15	25-06-06	1
94	25-14-13	2	14	25-06-05	3
93	25-14-12	1	13	25-06-04	3
92	25-14-10	1	12	25-06-03	1
91	25-14-08	1	11	25-06-02	1
90	25-14-07	1	10	25-06-01	1
89	25-14-06	1	9	25-04-01	1
88	25-14-05	1	8	25-03-01	1
87	25-14-04	1	7	25-01-01	1
86	25-14-03	1	6	2-10-04	1
85	25-14-02	1	5	2-10-03	2
84	25-14-01	1	4	2-10-02	2
83	25-13-12	1	3	2-10-01	1
			2	17-MT014	4
			1	124-MT013	2

EFFORTS HAVE BEEN MADE TO ILLUSTRATE ALL PARTS FOUND ON THIS MODEL.
A DIGITAL VERSION OF THIS DOCUMENT IS AVAILABLE FOR DOWNLOAD AT RAPIDOTRAINS.COM.
SHOULD YOU NOT BE ABLE TO LOCATE A SPECIFIC PART, PLEASE CONTACT US FOR ASSISTANCE.