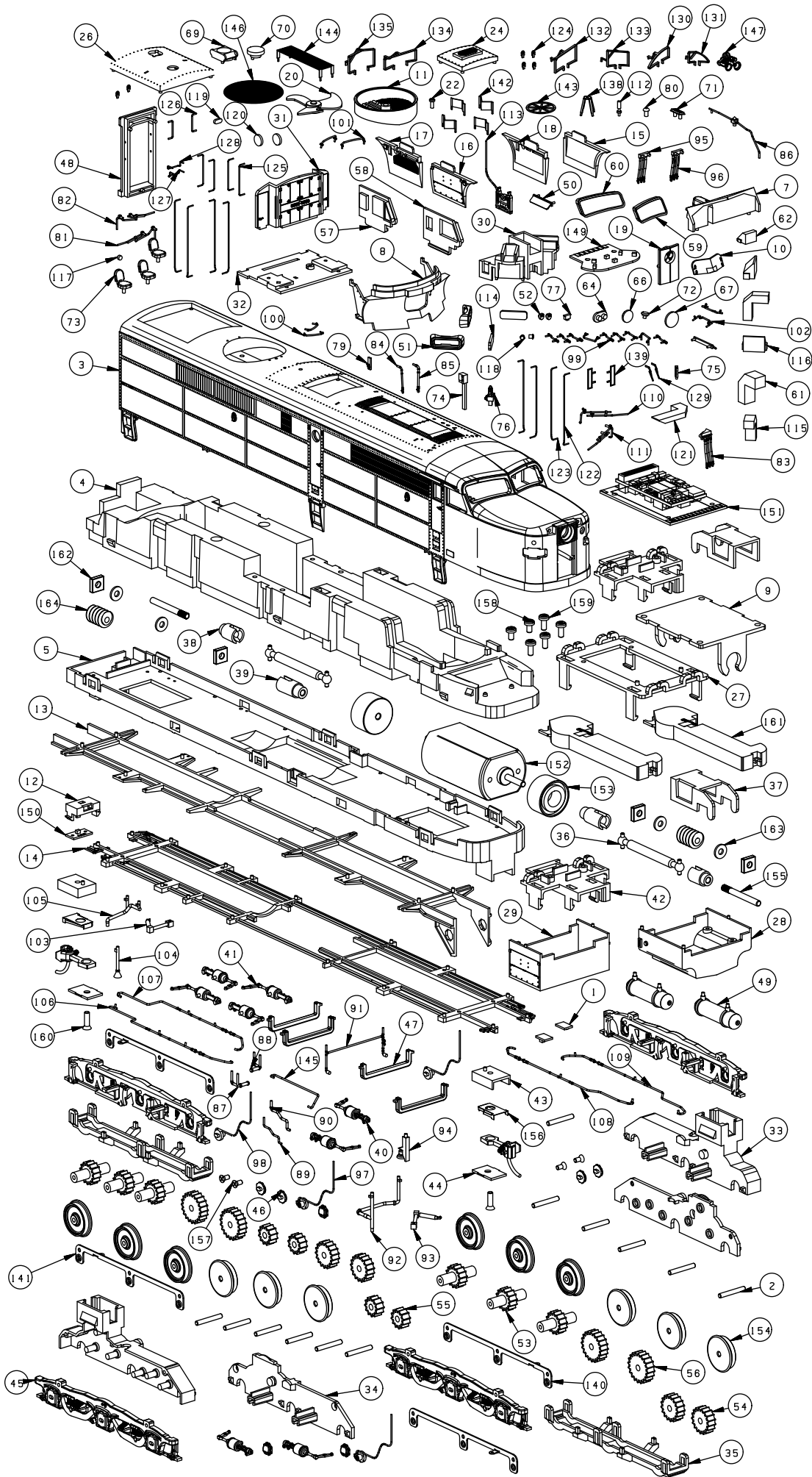


AMERICAN LOCOMOTIVE CO.  
**PA-2** SP

HO SCALE



AMERICAN LOCOMOTIVE CO.  
**PA-2** SP

HO SCALE



164	WORM D6.0	2
163	WASHER 0.6 MM	4
162	SQUARE BEARING D2D5H1.5	4
161	SPEAKER	2
160	SCREW 1.7X6 KB	2
159	SCREW 1.7X4 PM	4
158	SCREW 1.7X3 PB	2
157	SCREW 1.4X3 KB	4
156	RTR301-MT001	2
155	R1-MT004	4
154	R1-MT002	12
153	R1-MT001	2
152	MOTOR(185)	1
151	23-PCB-06	1
150	23-PCB-02	1
149	23-PCB-01	1
148	23-MT046	1
147	23-MT044	1
146	23-MT040	1
145	23-MT039	1
144	23-MT037	1
143	23-MT036	1
142	23-MT034	4
141	23-MT027	2
140	23-MT026	2
139	23-MT022	3
138	23-MT021	1
137	23-MT020	1
136	23-MT019	1
135	23-MT018	1
134	23-MT017	1
133	23-MT016	1
132	23-MT015	1
131	23-MT014	1
130	23-MT013	1
129	23-MT009	2
128	23-MT007	1
127	23-MT006	1
126	23-MT005	2
125	23-MT004	4
PC NO	PART NAME	QTY

124	23-MT003	8
123	23-MT002	4
122	23-MT001	4
121	23-19-17	1
120	23-19-15	2
119	23-19-13	1
118	23-19-12	2
117	23-19-11	2
116	23-19-07	2
115	23-19-06	2
114	23-19-05	2
113	23-17-14	1
112	23-17-10	1
111	23-17-06	1
110	23-17-05	1
109	23-17-04	1
108	23-17-03	1
107	23-17-02	1
106	23-17-01	1
105	23-16-13	1
104	23-16-12	1
103	23-16-11	1
102	23-16-10	2
101	23-16-09	2
100	23-16-07	2
99	23-16-05	9
98	23-16-04	2
97	23-16-03	2
96	23-16-02	1
95	23-16-01	1
94	23-15-17	1
93	23-15-16	1
92	23-15-15	1
91	23-15-14	1
90	23-15-13	1
89	23-15-12	1
88	23-15-11	1
87	23-15-10	1
86	23-15-09	1
85	23-15-06	1
84	23-15-05	1
83	23-15-03	1
82	23-15-02	1
81	23-15-01	1
80	23-14-19	1
79	23-14-18	1
78	23-14-15	1
77	23-14-14	1
76	23-14-11	1
75	23-14-10	1
74	23-14-09	1
73	23-14-08	3
72	23-14-07	1
71	23-14-05	1
70	23-14-03	1
69	23-14-02	1
68	23-14-01	1
67	23-13-19	1
66	23-13-18	1
65	23-13-17	1
64	23-13-15	1
63	23-13-11	1
PC NO	PART NAME	QTY

62	23-13-08	1
61	23-13-07	1
60	23-13-05	1
59	23-13-04	1
58	23-13-02	1
57	23-13-01	1
56	23-12-04	4
55	23-12-03	4
54	23-12-02	4
53	23-12-01	6
52	23-11-12	2
51	23-11-10	2
50	23-11-08	2
49	23-11-07	2
48	23-11-04	1
47	23-11-03	4
46	23-11-02	7
45	23-11-01	4
44	23-10-14	2
43	23-10-13	2
42	23-10-10	2
41	23-10-09	4
40	23-10-08	4
39	23-10-07	2
38	23-10-06	2
37	23-10-05	2
36	23-10-04	2
35	23-10-03	2
34	23-10-02	2
33	23-10-01	2
32	23-09-11	1
31	23-09-10	1
30	23-09-09	1
29	23-09-07	1
28	23-09-06	1
27	23-09-05	1
26	23-09-04	1
25	23-09-03	1
24	23-09-02	1
23	23-09-01	1
22	23-08-16	1
21	23-08-14	1
20	23-08-12	1
19	23-08-10	1
18	23-08-06	1
17	23-08-05	1
16	23-08-04	1
15	23-08-03	1
14	23-07-01	1
13	23-06-01	1
12	23-05-14	1
11	23-05-13	1
10	23-05-10	1
9	23-05-08	1
8	23-05-03	1
7	23-05-02	1
6	23-05-01	1
5	23-04-01	1
4	23-03-01	1
3	23-01-06	1
2	18-MT048	12
1	14-PCB02	2
PC NO	PART NAME	QTY