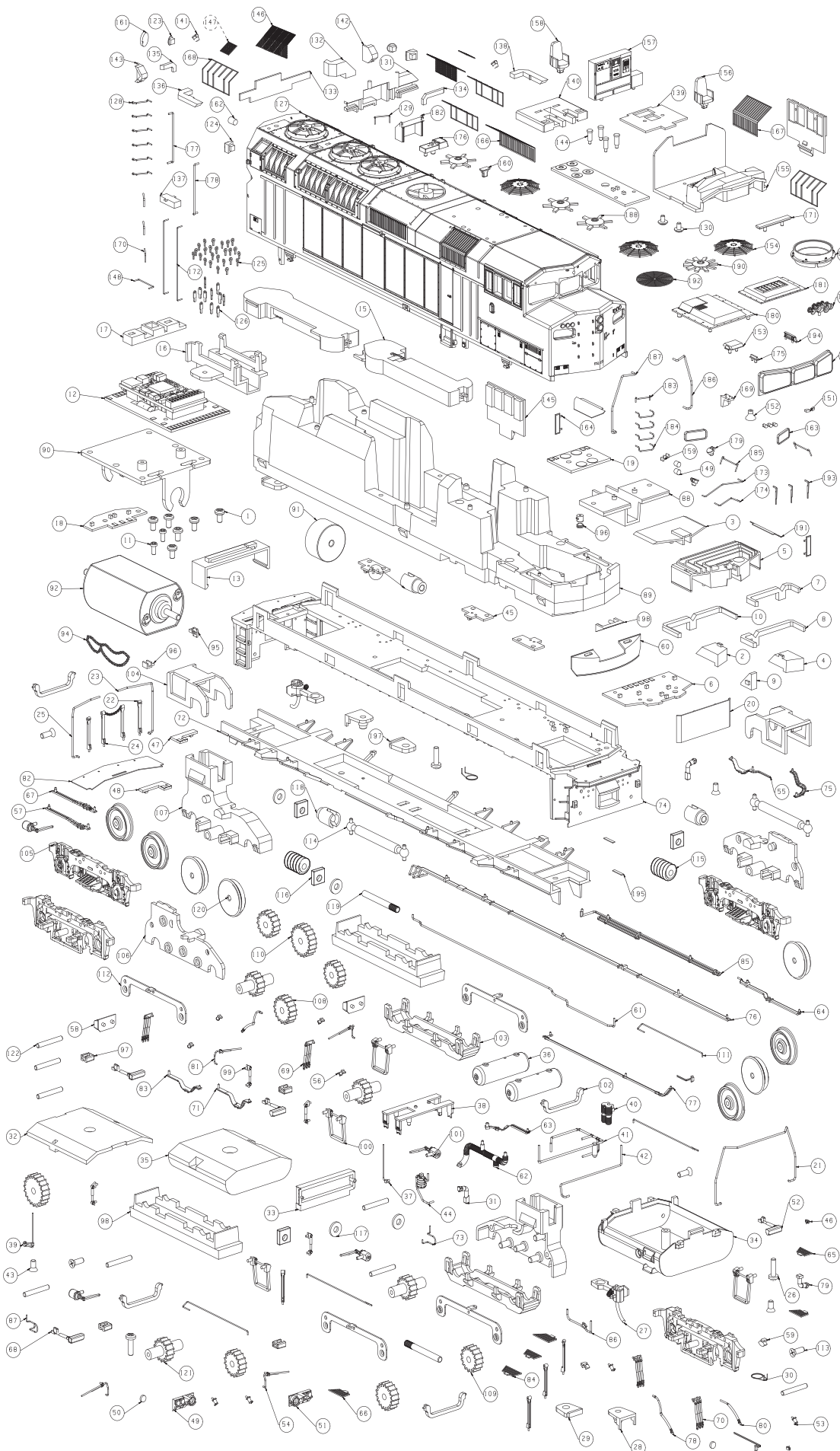


L'ÉCHELLE HO SCALE

GENERAL MOTORS DIESEL DIVISION

F59PH PHASE II (GO TRANSIT)



PC NO	PART NAME	QTY	PC NO	PART NAME	QTY
1	SCREW 1.7X3 PM	6	101	B-08-01	4
2	19-07-28	1	102	B-04-07	4
3	19-06-03	1	103	19-10-17	2
4	19-07-27	1	104	19-10-03	2
5	19-10-04	1	105	B-04-01	4
6	19-PCB01	1	106	B-04-04	2
7	19-07-06	1	107	B-04-03	2
8	19-07-21	1	108	B-13-04	2
9	19-07-08	1	109	B-13-02	4
10	19-07-05	1	110	B-13-01	2
11	SCREW 1.4X3 PB	2	111	B-MT026	4
12	19-PCB09	1	112	B-MT032	4
13	19-10-16	1	113	SCREW 1.7X5 KB	4
14	SCREW 1.2X3.5 KB	1	114	19-10-02	2
15	SPEAKER	2	115	WORM D6.0	2
16	19-10-05	1	116	SQUARE BEARING 025SH1.52	4
17	19-10-09	1	117	B-04-12	4
18	19-PCB06	1	118	B-08-30	2
19	19-PCB05	1	119	R1-MT004	2
20	19-05-04	1	120	R1-MT002	8
21	19-MT012	1	121	B-13-03	4
22	19-09-03	6	122	R1-MT003	8
23	19-MT010	1	123	19-06-18	2
24	19-09-02	1	124	19-06-17	2
25	19-MT011	1	125	R1-MT022	25
26	SCREW 1.7X6 PB	3	126	19-MT029	11
27	METAL COUPLER SHORT	2	127	19-01-04	1
28	19-09-09	2	128	B-MT016	6
29	19-09-08	1	129	19-MT031	1
30	220R-MT008	2	130	SCREW 1.4X4 PMB	2
31	19-06-10	2	131	19-10-10	1
32	19-05-02	1	132	19-07-22	1
33	19-05-12	1	133	19-10-11	1
34	19-11-01	1	134	19-07-23	1
35	19-02-02	1	135	19-07-24	1
36	19-11-04	2	136	19-07-18	1
37	19-09-13	1	137	19-07-20	1
38	19-11-05	1	138	19-07-19	1
39	19-09-14	1	139	19-06-02	1
40	19-05-17	1	140	19-06-01	1
41	19-09-15	1	141	19-06-09	2
42	19-MT035	1	142	19-10-13	1
43	SCREW 1.7X3.5 KB	3	143	19-10-14	1
44	19-09-11	1	144	SPRING PIN 5.0	4
45	19-PCB07	3	145	19-07-03	2
46	LED	2	146	19-MT015	2
47	19-PCB03	1	147	19-MT014	2
48	19-PCB04	1	148	19-MT027	1
49	19-05-16	1	149	19-07-11	2
50	19-07-13	2	150	19-MT034	1
51	19-05-15	1	151	19-07-14	2
52	19-06-13	2	152	19-06-07	1
53	B-08-10	4	153	19-11-08	1
54	B-08-08	2	154	19-09-01	3
55	19-08-07	1	155	19-04-03	1
56	B-08-11	4	156	19-05-05	1
57	19-09-05	1	157	19-04-04	1
58	B-08-17	2	158	19-05-06	1
59	19-06-14	2	159	19-07-10	6
60	19-05-03	2	160	19-11-06	1
61	19-MT013	1	161	19-07-09	1
62	19-05-13	1	162	19-07-12	1
63	19-08-03	1	163	19-07-04	2
64	19-08-08	1	164	19-MT024	2
65	19-MT021	2	165	19-07-07	1
66	19-MT020	2	166	19-MT018	1
67	19-09-04	1	167	19-MT017	1
68	19-06-12	2	168	19-MT016	4
69	B-08-06	2	169	19-06-06	1
70	B-08-07	2	170	B-MT018	3
71	19-09-07	1	171	19-05-14	1
72	19-04-01	1	172	19-MT005	2
73	19-MT033	1	173	19-MT008	1
74	19-03-01	1	174	19-MT009	1
75	19-08-04	1	175	19-11-09	1
76	19-08-01	1	176	19-11-07	1
77	19-08-06	1	177	19-MT007	1
78	B-08-05	2	178	19-MT006	1
79	19-06-11	1	179	19-06-08	2
80	B-08-04	1	180	19-05-09	1
81	B-08-09	2	181	19-05-08	1
82	19-MT023	1	182	19-11-03	1
83	19-09-06	1	183	400-MT008	1
84	19-MT019	2	184	19-MT001	4
85	19-08-02	1	185	19-MT002	2
86	19-08-05	1	186	19-MT003	1
87	19-MT032	1	187	19-MT004	1
88	19-10-06	1	188	19-05-11	3
89	19-02-01	1	189	19-05-07	1
90	19-10-01	1	190	19-05-10	1
91	R1-MT001	2	191	19-MT026	2
92	MOTOR	1	192	B-MT005	1
93	B-08-31	2	193	400-MT019	3
94	CHAIN	1	194	B-08-19	1
95	B-08-29	1	195	19-MT038	2
96	B-08-28	1	196	19-06-19	1
97	19-09-10	4	197	19-09-16	2
98	19-04-02	2	198	19-06-20	1
99	B-08-03	4			
100	B-08-02	4			

A DIGITAL VERSION OF THIS DOCUMENT IS AVAILABLE FOR DOWNLOAD AT RAPIDOTRAINS.COM. SHOULD YOU NOT BE ABLE TO LOCATE A SPECIFIC PART, PLEASE CONTACT US FOR ASSISTANCE.

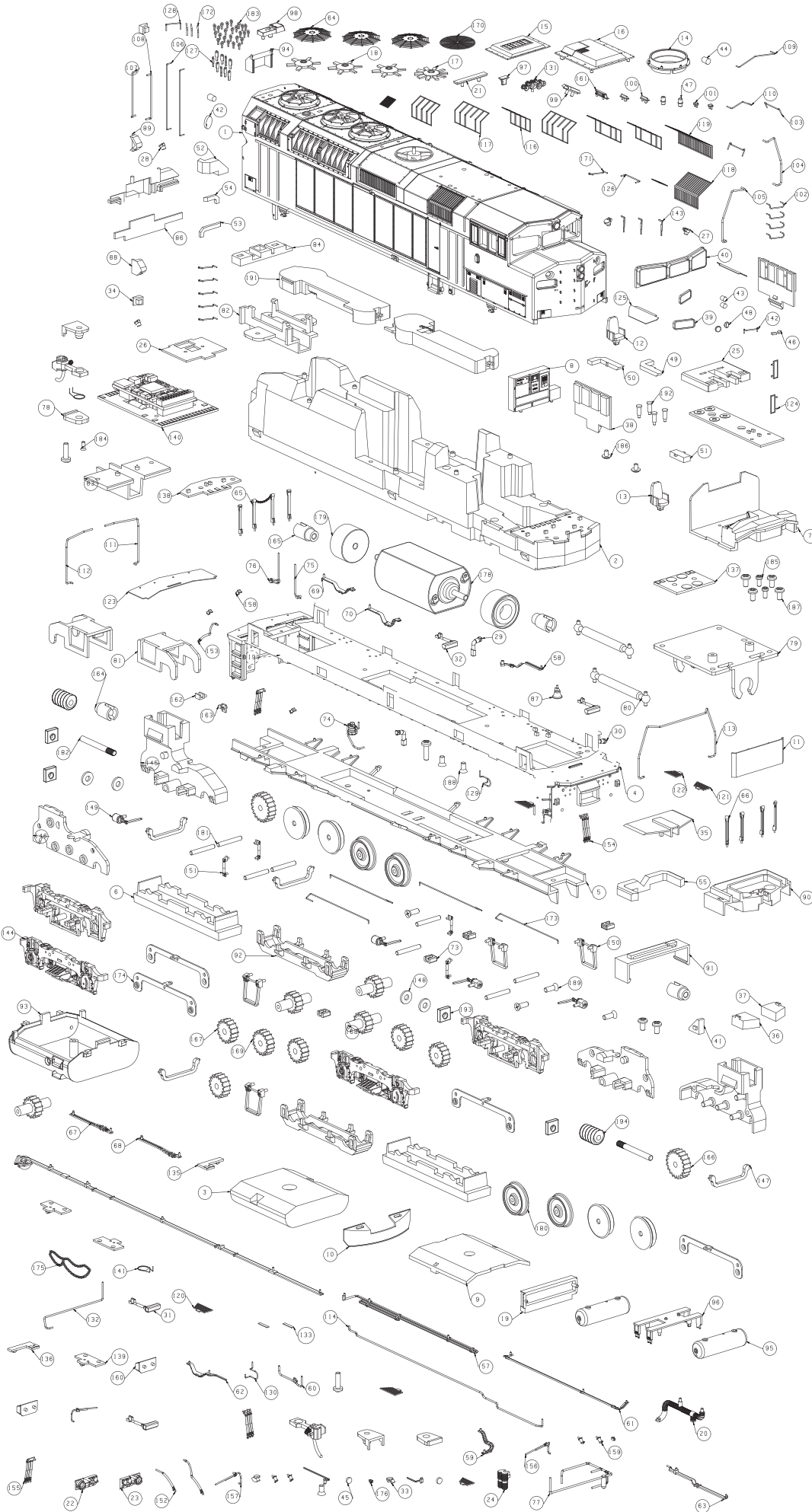
L'ÉCHELLE HO SCALE

GENERAL MOTORS DIESEL DIVISION

F59PH PHASE II (METROLINK)



LOK SOUND
EST. 1999



PC NO	PART NAME	QTY	PC NO	PART NAME	QTY
98	19-11-07	1	1	19-01-03	1
99	19-11-08	1	2	19-02-01	1
100	19-11-09	2	3	19-02-02	1
101	19-11-11	2	4	19-03-01	1
102	19-MT001	4	5	19-04-01	1
103	19-MT002	2	6	19-04-02	2
104	19-MT003	1	7	19-04-03	1
105	19-MT004	1	8	19-04-04	1
106	19-MT005	2	9	19-05-02	1
107	19-MT006	1	10	19-05-03	2
108	19-MT007	1	11	19-05-04	1
109	19-MT008	1	12	19-05-05	1
110	19-MT009	1	13	19-05-06	1
111	19-MT010	1	14	19-05-07	1
112	19-MT011	1	15	19-05-08	1
113	19-MT012	1	16	19-05-09	1
114	19-MT013	1	17	19-05-10	1
115	19-MT014	2	18	19-05-11	3
116	19-MT015	2	19	19-05-12	1
117	19-MT016	4	20	19-05-13	1
118	19-MT017	1	21	19-05-14	1
119	19-MT018	1	22	19-05-15	1
120	19-MT019	2	23	19-05-16	1
121	19-MT020	2	24	19-05-17	1
122	19-MT021	2	25	19-06-01	1
123	19-MT023	1	26	19-06-02	1
124	19-MT024	2	27	19-06-08	2
125	19-MT026	2	28	19-06-09	2
126	19-MT027	1	29	19-06-10	2
127	19-MT029	9	30	19-06-11	1
128	19-MT031	1	31	19-06-12	2
129	19-MT032	1	32	19-06-13	2
130	19-MT033	1	33	19-06-14	2
131	19-MT034	1	34	19-06-15	2
132	19-MT035	1	35	19-06-16	1
133	19-MT038	2	36	19-07-01	1
134	19-PCB01	1	37	19-07-02	1
135	19-PCB03	1	38	19-07-03	2
136	19-PCB04	1	39	19-07-04	2
137	19-PCB05	1	40	19-07-07	1
138	19-PCB06	1	41	19-07-08	1
139	19-PCB07	3	42	19-07-09	1
140	19-PCB09	1	43	19-07-11	2
141	220R-MT008	2	44	19-07-12	2
142	400-MT008	1	45	19-07-13	2
143	400-MT019	3	46	19-07-14	2
144	8-04-01	4	47	19-07-15	2
145	8-04-03	2	48	19-07-16	2
146	8-04-04	2	49	19-07-18	1
147	8-04-07	4	50	19-07-19	1
148	8-04-12	4	51	19-07-20	1
149	8-08-01	4	52	19-07-22	1
150	8-08-02	4	53	19-07-23	1
151	8-08-03	4	54	19-07-24	1
152	8-08-04	1	55	19-07-29	1
153	8-08-05	2	56	19-08-01	1
154	8-08-06	2	57	19-08-02	1
155	8-08-07	2	58	19-08-03	1
156	8-08-08	2	59	19-08-04	1
157	8-08-09	2	60	19-08-05	1
158	8-08-10	4	61	19-08-06	1
159	8-08-11	4	62	19-08-07	1
160	8-08-17	2	63	19-08-08	1
161	8-08-19	1	64	19-08-01	3
162	8-08-28	1	65	19-09-02	1
163	8-08-29	1	66	19-09-03	6
164	8-08-30	2	67	19-09-04	1
165	8-08-31	2	68	19-09-05	1
166	8-13-01	2	69	19-09-06	1
167	8-13-02	4	70	19-09-07	1
168	8-13-03	4	71	19-09-08	1
169	8-13-04	2	72	19-09-09	2
170	8-MT005	1	73	19-09-10	4
171	8-MT016	6	74	19-09-11	1
172	8-MT018	3	75	19-09-13	1
173	8-MT026	4	76	19-09-14	1
174	8-MT032	4	77	19-09-15	1
175	CHAIN	1	78	19-09-16	1
176	LED	2	79	19-10-01	1
177	METAL COUPLER SHORT	2	80	19-10-02	2
178	MOTOR	1	81	19-10-03	2
179	RI-MT001	2	82	19-10-05	1
180	RI-MT002	8	83	19-10-06	1
181	RI-MT003	8	84	19-10-09	1
182	RI-MT004	2	85	19-10-10	1
183	RI-MT022	25	86	19-10-11	1
184	SCREW 1.2X3.5 KB	1	87	19-10-12	1
185	SCREW 1.4X3 PB	2	88	19-10-13	1
186	SCREW 1.4X4 PWB	2	89	19-10-14	1
187	SCREW 1.7X3 PM	6	90	19-10-15	1
188	SCREW 1.7X3.5 KB	3	91	19-10-16	1
189	SCREW 1.7X5 KB	4	92	19-10-17	2
190	SCREW 1.7X6 PB	3	93	19-11-01	1
191	SPEAKER	2	94	19-11-03	1
192	SPRING PIN 5.0	4	95	19-11-04	2
193	SQUARE BEARING 0205H1.5.2	4	96	19-11-05	1
194	WORM D6.0	2	97	19-11-06	1