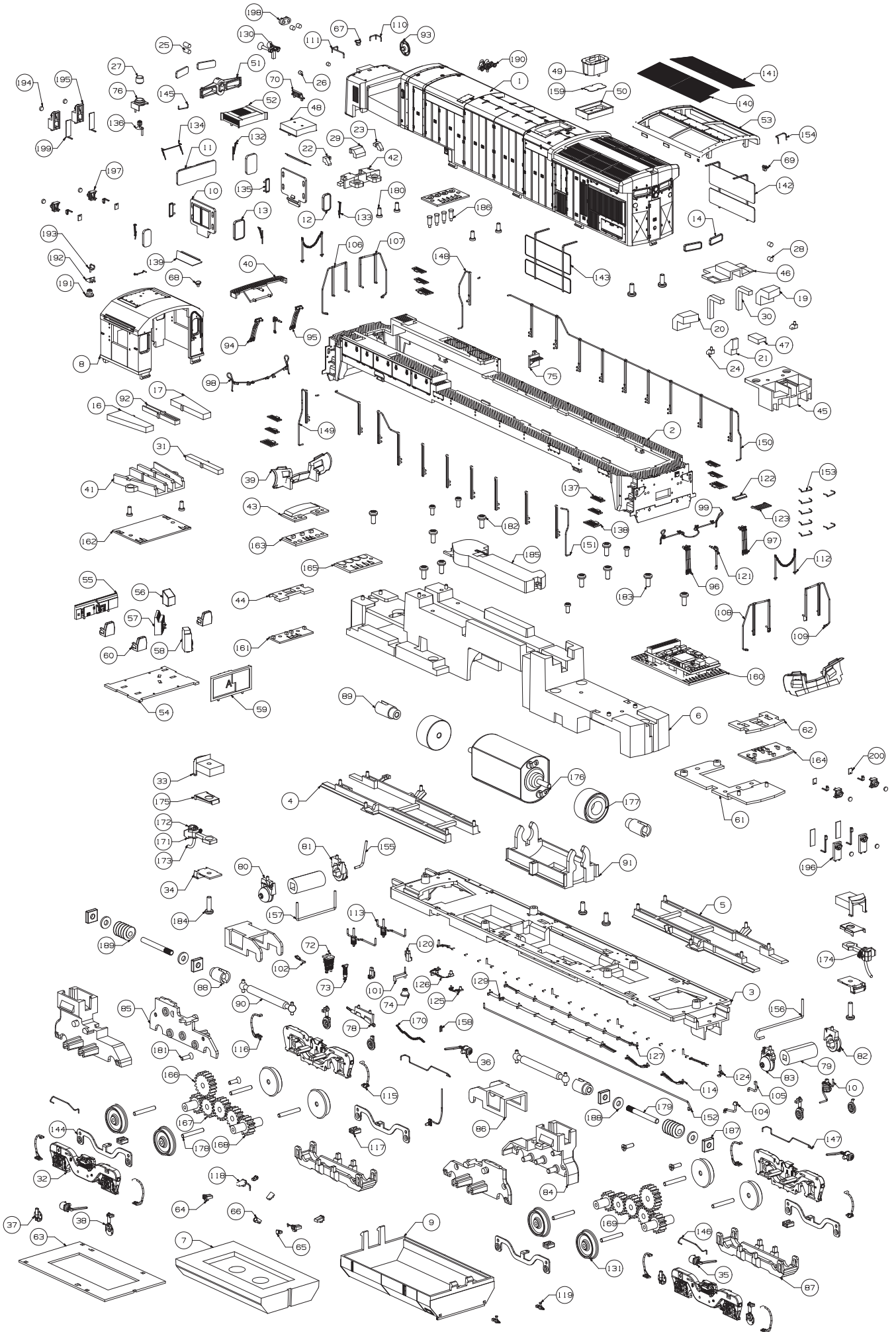


HO SCALE

GENERAL ELECTRIC
B36-7

**ATCHISON, TOPEKA & SANTA FE RAILWAY
BRITISH COLUMBIA RAILWAY**



EFFORTS HAVE BEEN MADE TO ILLUSTRATE ALL PARTS FOUND ON THIS MODEL. OTHER VERSIONS OF THIS LOCOMOTIVE MAY FEATURE DIFFERENT PARTS. A DIGITAL VERSION OF THIS DOCUMENT IS AVAILABLE FOR DOWNLOAD AT RAPIDOTRAINS.COM. SHOULD YOU NOT BE ABLE TO LOCATE A SPECIFIC PART, PLEASE CONTACT US FOR ASSISTANCE.

67	18-11-04	1
66	18-11-03	2
65	18-11-02	2
64	18-11-01	2
63	18-10-11	1
62	18-10-09	1
61	18-10-08	1
60	18-10-07	3
59	18-10-06	1
58	18-10-05	1
57	18-10-04	1
56	18-10-03	1
55	18-10-02	1
54	18-10-01	1
53	18-09-15	1
52	18-09-14	1
51	18-09-11	1
50	18-09-10	1
49	18-09-09	1
48	18-09-08	1
47	18-09-07	1
46	18-09-06	1
45	18-09-05	1
44	18-09-04	1
43	18-09-03	1
42	18-09-02	1
41	18-09-01	1
40	18-08-18	1
39	18-08-15	1
38	18-08-08	4
37	18-08-07	4
36	18-08-06	1
35	18-08-05	3
34	18-08-04	2
33	18-08-03	2
32	18-08-01	4
31	18-07-30	1
30	18-07-29	2
29	18-07-25	1
28	18-07-19	2
27	18-07-18	1
26	18-07-17	2
25	18-07-16	2
24	18-07-15	2
23	18-07-14	1
22	18-07-13	1
21	18-07-12	1
20	18-07-11	1
19	18-07-10	1
18	18-07-09	1
17	18-07-08	1
16	18-07-07	1
15	18-07-06	1
14	18-07-05	4
13	18-07-04	2
12	18-07-03	2
11	18-07-02	1
10	18-07-01	2
9	18-06-01	1
8	18-05-02	1
7	18-04-02	1
6	18-04-01	1
5	18-03-03	1
4	18-03-02	1
3	18-03-01	1
2	18-02-02	1
1	18-01-01 ATSF 18-01-02 BCOL	1
PC NO	PART NAME	QTY

134	18-MT005	1
133	18-MT004	2
132	18-MT003	2
131	18-MT001	8
130	18-18-01	1
129	18-16-06	1
128	18-16-05	1
127	18-16-04	1
126	18-16-03	1
125	18-16-02	1
124	18-16-01	1
123	18-15-16	1
122	18-15-13	1
121	18-15-12	2
120	18-15-11	2
119	18-15-10	2
118	18-15-09	2
117	18-15-08	4
116	18-15-07	4
115	18-15-06	4
114	18-15-05	2
113	18-15-04	2
112	18-15-03	2
111	18-14-11	1
110	18-14-10	1
109	18-14-04	1
108	18-14-03	1
107	18-14-02	1
106	18-14-01	1
105	18-13-13	1
104	18-13-12	1
103	18-13-11	1
102	18-13-10	1
101	18-13-09	1
100	18-13-08	1
99	18-13-07	1
98	18-13-06	1
97	18-13-05	1
96	18-13-04	1
95	18-13-03	1
94	18-13-02	1
93	18-13-01	1
92	18-12-10	1
91	18-12-08	1
90	18-12-07	2
89	18-12-06	2
88	18-12-05	2
87	18-12-04	2
86	18-12-03	2
85	18-12-02	2
84	18-12-01	2
83	18-11-24	1
82	18-11-23	1
81	18-11-21	1
80	18-11-20	1
79	18-11-19	2
78	18-11-18	1
77	18-11-17	1
76	18-11-16	1
75	18-11-15	1
74	18-11-12	1
73	18-11-11	1
72	18-11-09	1
71	18-11-08	1
70	18-11-07	1
69	18-11-06	1
68	18-11-05	1
PC NO	PART NAME	QTY

200	18-MT010	4
199	18-MT002	4
198	18-08-13	1
197	18-08-11	4
196	18-08-10	2
195	18-08-09	2
194	18-07-20	8
193	18-13-14	1
192	18-11-30	1
191	18-11-12	1
190	18-18-03	1
189	WORM D6.0	2
188	WASHER 0.7MM	4
187	SQUARE BEARING D2D5H1.5	4
186	SPRING PIN 5.0	4
185	SPEAKER IPHONE 4	1
184	SCREW 1.7X6 PB	2
183	SCREW 1.7X4 PM	2
182	SCREW 1.7X4 PB	12
181	SCREW 1.4X4 KB	4
180	SCREW 1.4X3 PB	10
179	R1-MT004	2
178	R1-MT003	8
177	R1-MT001	2
176	MOTOR (180)	1
175	GF-MT003	2
174	GF-MT002 V2	2
173	GF-MT001	2
172	GF-02-02	2
171	GF-02-01	2
170	CHAIN	1
169	2-10-04	2
168	2-10-03	4
167	2-10-02	4
166	2-10-01	2
165	18-PCB06	1
164	18-PCB05	1
163	18-PCB04	1
162	18-PCB03	1
161	18-PCB02	1
160	18-PCB01	1
159	18-MT047	1
158	18-MT045	1
157	18-MT039	1
156	18-MT038	1
155	18-MT037	1
154	18-MT035	1
153	18-MT033	8
152	18-MT030	1
151	18-MT029	1
150	18-MT028	1
149	18-MT027	1
148	18-MT026	1
147	18-MT025	2
146	18-MT024	2
145	18-MT023	1
144	18-MT022	4
143	18-MT020	1
142	18-MT019	1
141	18-MT018	1
140	18-MT017	1
139	18-MT015	2
138	18-MT014	4
137	18-MT013	8
136	18-MT012	1
135	18-MT006	2
PC NO	PART NAME	QTY