



PROCOR 3000 CU FT SODIUM CHLORATE HOPPER

Thank you for purchasing the Procor 3000 cu ft aluminum sodium chlorate hopper from Rapido Trains, Inc. Please note that the minimum radius for these cars is 18 inches. Be sure to give your model a quick inspection to ensure that the couplers are working correctly and the wheels are in gauge before putting it on your layout.

PROTOTYPE HISTORY

In the early 1980s sodium chlorate began to replace chlorine as a bleaching agent in the paper making process. Historically, sodium chlorate had been transported in solution form in tank cars. With significant increase in demand, a more efficient delivery method was needed. Transportation in crystal form by covered hopper car was a natural solution. However, a means to address the corrosive properties of sodium chlorate was required.

Initially, conventional steel bodied covered hopper cars equipped with protective internal coatings were deployed. However, corrosion damage related to coating failures resulted in significant maintenance costs. Procor went on to develop an all-aluminum construction covered hopper car. Compared to a conventional gravity discharge covered hopper car, operation of the aluminum equivalent is unorthodox — sodium chlorate is loaded as a dry crystal through the round roof hatches and then emptied as a slurry. Located above the discharge openings and just below the side sills, a pipe fitted with spray nozzles (known as a sparger) is used to introduce hot water to liquefying the sodium chlorate crystal. Outlet fittings at the very bottom of the gate assemblies facilitate complete evacuation of the payload.

The first group of twenty sodium chlorate covered hopper cars was constructed at Procor's Oakville, Ontario facility in 1982. During production, a number of refinements were incorporated, including steel end structures and retractable rooftop handrail assemblies. Production at the Oakville facility ceased in 2001. Over the years Procor would assemble a fleet of more than 1,300 aluminum sodium chlorate service covered hopper cars, a portion of which was constructed by NSC and Thrall.

LIMITED WARRANTY

Rapido Trains Inc. will send you any parts found to be missing or defective on this freight car, provided they are available. This warranty does not cover any damage from shipping — including loose parts — that may occur after the car has left our warehouse. It also does not cover unexpected plunges to the train room floor. Please call 1 (855) LRC-6917 or email us at service@rapidotrains.com.

HELP AND SUPPORT

Please contact us if you have any problems with your freight car. Also please visit the Product Support section of our web site, as we often address common issues. The Product Support section of our web site also includes an exploded diagram of your car.

KEEP IN TOUCH

Please visit our web site and click on the link to sign up for our newsletter. That way you will not miss a single new release from Rapido, and we also give you behind-the-scenes information about the world of model railroading. You can also check us out on Facebook and see what we've been up to on our YouTube channel.



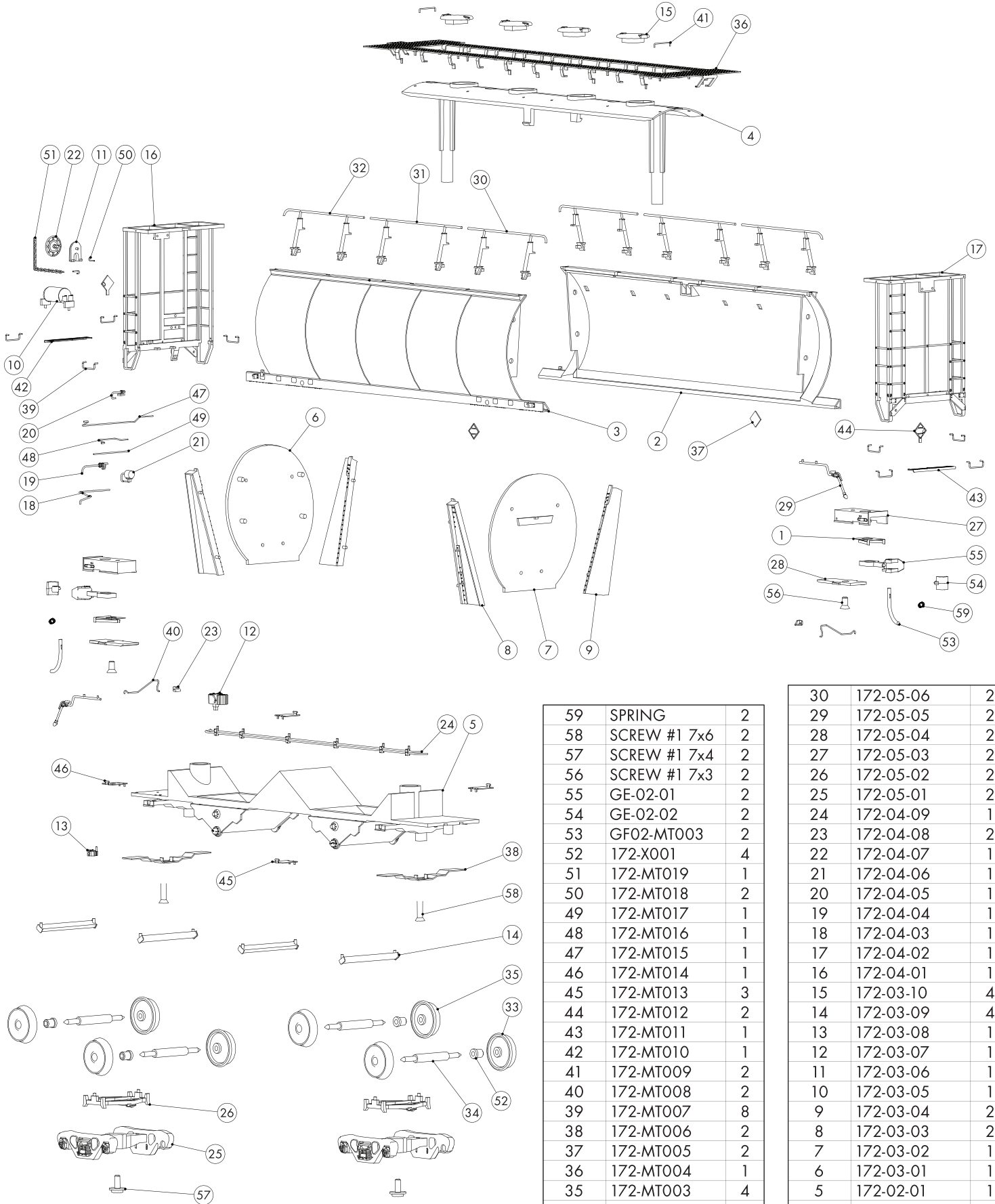
CANADA: 500 ALDEN ROAD • UNIT 21 • MARKHAM • ONTARIO • L3R 5H5
USA: PO BOX 796 • HIGGANUM • CONNECTICUT • 06441
Tel. 905.474.3314. Fax. 905.474.3325. Visit. www.rapidotrains.com

RAPIDO

HO SCALE

PROCOR

3000 CU FT SODIUM CHLORATE HOPPER



59	SPRING	2
58	SCREW #1 7x6	2
57	SCREW #1 7x4	2
56	SCREW #1 7x3	2
55	GE-02-01	2
54	GE-02-02	2
53	GF02-MT003	2
52	172-X001	4
51	172-MT019	1
50	172-MT018	2
49	172-MT017	1
48	172-MT016	1
47	172-MT015	1
46	172-MT014	1
45	172-MT013	3
44	172-MT012	2
43	172-MT011	1
42	172-MT010	1
41	172-MT009	2
40	172-MT008	2
39	172-MT007	8
38	172-MT006	2
37	172-MT005	2
36	172-MT004	1
35	172-MT003	4
34	172-MT002	4
33	172-MT001	4
32	172-05-08	2
31	172-05-07	2
PC NO	PART NAME	QTY

30	172-05-06	2
29	172-05-05	2
28	172-05-04	2
27	172-05-03	2
26	172-05-02	2
25	172-05-01	2
24	172-04-09	1
23	172-04-08	2
22	172-04-07	1
21	172-04-06	1
20	172-04-05	1
19	172-04-04	1
18	172-04-03	1
17	172-04-02	1
16	172-04-01	1
15	172-03-10	4
14	172-03-09	4
13	172-03-08	1
12	172-03-07	1
11	172-03-06	1
10	172-03-05	1
9	172-03-04	2
8	172-03-03	2
7	172-03-02	1
6	172-03-01	1
5	172-02-01	1
4	172-01-03	1
3	172-01-02	1
2	172-01-01	1
1	GF02-MT001	2
PC NO	PART NAME	QTY

EFFORTS HAVE BEEN MADE TO ILLUSTRATE ALL PARTS FOUND ON THIS MODEL.
 A DIGITAL VERSION OF THIS DOCUMENT IS AVAILABLE FOR DOWNLOAD AT RAPIDOTRAINS.COM.
 SHOULD YOU NOT BE ABLE TO LOCATE A SPECIFIC PART, PLEASE CONTACT US FOR ASSISTANCE.