



NORTHEASTERN CABOOSE

Thank you for purchasing the Northeastern Caboose from Rapido Trains, Inc. Please note that the recommended minimum radius for these cars is 18 inches. Be sure to give your model a quick inspection to ensure that the couplers are working correctly and the wheels are in gauge before putting it on your layout.

PROTOTYPE HISTORY

The so-called Northeastern Design Caboose was one of the first mass-produced all-steel construction cabooses. Originally designed by the Reading Company in the early 1920s, it was based in a proposed USRA design car, although the USRA design called for wood sheathing. The Reading built 285 cars, spread through several classes. The earliest cars had solid underframes, but later cars were equipped with Duryea cushion underframes.

The Reading had such success with these cars that quickly other roads in the Northeast bought copies as well, including the Central Railroad of New Jersey, Lehigh & New England, Lehigh Valley, Pittsburgh & West Virginia and the Western Maryland. The Reading built some of these cars while others were built in the various railroad's shops. With production spread out between so many locations and roads, variations were bound to be made to the original design. Different groups of cars were equipped with different trucks, running boards, steps, grabs and end wall windows (or lack thereof).

The cars soldiered on into Conrail and Chessie and saw service right up until the end of caboose operations on those roads. Many were sold second-hand to other railroads - Class 1 and shortlines alike. Because of their long life span and late service, many of these cabooses have gone on to be preserved either in museums, personal collections or even as part of hotels!

INTERIOR LIGHTING

Your caboose features interior lighting which works on DC and DCC track power systems. The interior lighting can be turned off by waving the Rapido Lighter magnetic wand over a hidden switch in roof. Just wave the wand sideways across the roof on the opposite side of the cupola from the smokestack to turn the lighting off and on. Please note that it is not designed for high-voltage (over 15V) DC power packs or European AC systems.

LIMITED WARRANTY

Rapido Trains Inc. will send you any parts found to be missing or defective on this passenger car, provided they are available. This warranty does not cover any damage from shipping — including loose parts — that may occur after the car has left our warehouse. It also does not cover unexpected plunges to the train room floor. Please call 1 (855) LRC-6917 or email us at service@rapidotrains.com.

HELP AND SUPPORT

Please contact us if you have any problems with your caboose. Also please visit the Product Support section of our web site, as we often address common issues. The Product Support section of our web site also includes the exploded diagram of your car found on the other side of this page.

KEEP IN TOUCH

Please visit our web site and click on the link to sign up for our newsletter. That way you will not miss a single new release from Rapido, and we also give you behind-the-scenes information about the world of model railroading. You can also check us out on Facebook and see what we've been up to on our YouTube channel.

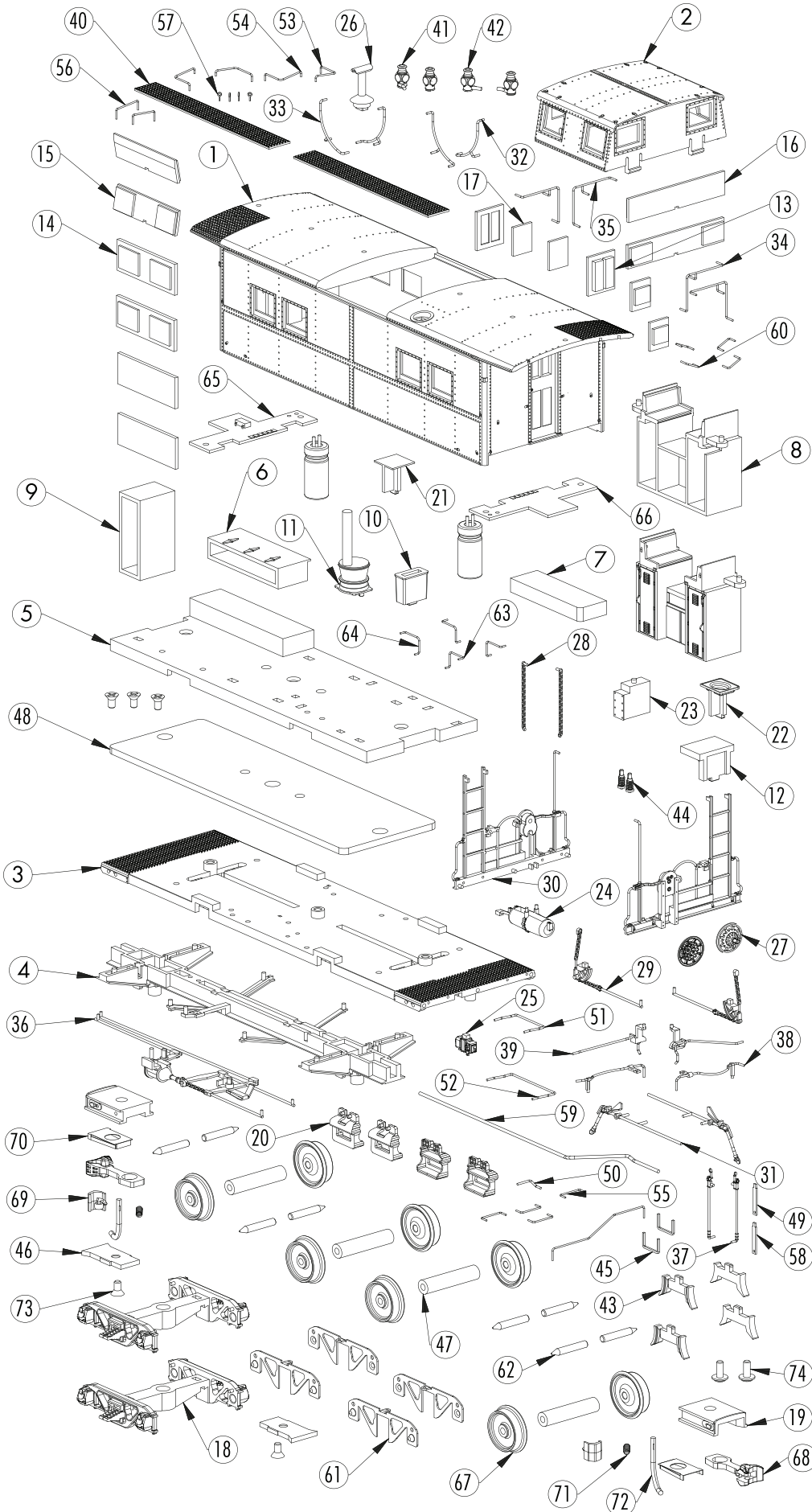


CANADA: 500 ALDEN ROAD • UNIT 21 • MARKHAM • ONTARIO • L3R 5H5
USA: PO BOX 796 • HIGGANUM • CONNECTICUT • 06441
Tel. 905.474.3314. Fax. 905.474.3325. Visit. www.rapidotrains.com

RAPIDO

HO SCALE

NORTHEASTERN CABOOSE



| | | |
|----|-----------------|---|
| 74 | SCREW 1.4X4 PWB | 2 |
| 73 | SCREW 1.4X3 KB | 5 |
| 72 | GF-06-M003R1 | 2 |
| 71 | GF-06-M002 | 2 |
| 70 | GF-06-M001-R1 | 2 |
| 69 | GF-06-02 | 2 |
| 68 | GF-06-01 | 2 |
| 67 | 156-MT010 | 8 |
| 66 | 144-PCB02 | 1 |
| 65 | 144-PCB01 | 1 |
| 64 | 144-MT033 | 2 |
| 63 | 144-MT032 | 2 |
| 62 | 144-MT031 | 8 |
| 61 | 144-MT028 | 4 |
| 60 | 144-MT024 | 4 |
| 59 | 144-MT023 | 1 |
| 58 | 144-MT020 | 2 |
| 57 | 144-MT019 | 4 |
| 56 | 144-MT012 | 2 |
| 55 | 144-MT011 | 4 |
| 54 | 144-MT007 | 2 |
| 53 | 144-MT006 | 2 |
| 52 | 144-MT005 | 1 |
| 51 | 144-MT004 | 1 |
| 50 | 144-MT003 | 1 |
| 49 | 144-MT002 | 1 |
| 48 | 144-MT001 | 1 |
| 47 | 144-09-10 | 4 |
| 46 | 144-09-08 | 2 |
| 45 | 144-09-07 | 2 |
| 44 | 144-09-06 | 2 |
| 43 | 144-09-05 | 4 |
| 42 | 144-09-04 | 2 |
| 41 | 144-09-03 | 2 |
| 40 | 144-09-01 | 2 |
| 39 | 144-08-13 | 2 |
| 38 | 144-08-12 | 2 |
| 37 | 144-08-10 | 2 |
| 36 | 144-08-09 | 1 |
| 35 | 144-08-08 | 2 |
| 34 | 144-08-07 | 2 |
| 33 | 144-08-06 | 2 |
| 32 | 144-08-05 | 2 |
| 31 | 144-08-04 | 2 |
| 30 | 144-08-01 | 2 |
| 29 | 144-07-12 | 2 |
| 28 | 144-07-11 | 2 |
| 27 | 144-07-10 | 2 |
| 26 | 144-07-08 | 1 |
| 25 | 144-07-06 | 1 |
| 24 | 144-07-05 | 1 |
| 23 | 144-07-03 | 1 |
| 22 | 144-07-02 | 1 |
| 21 | 144-07-01 | 1 |
| 20 | 144-06-07 | 4 |
| 19 | 144-06-06 | 2 |
| 18 | 144-06-02 | 2 |
| 17 | 144-05-09 | 4 |
| 16 | 144-05-08 | 2 |
| 15 | 144-05-06 | 2 |
| 14 | 144-05-05 | 4 |
| 13 | 144-05-01 | 2 |
| 12 | 144-04-11 | 1 |
| 11 | 144-04-08 | 1 |
| 10 | 144-04-07 | 1 |
| 9 | 144-04-06 | 1 |
| 8 | 144-04-05 | 2 |
| 7 | 144-04-04 | 1 |
| 6 | 144-04-03 | 1 |
| 5 | 144-04-01 | 1 |
| 4 | 144-03-03 | 1 |
| 3 | 144-03-01 | 1 |
| 2 | 144-02-04 | 1 |
| 1 | 144-01-01 | 1 |

PC NO PART NAME QTY

EFFORTS HAVE BEEN MADE TO ILLUSTRATE THE MOST COMMON PARTS FOUND ON THIS MODEL. DIGITAL VERSIONS OF ALL VERSIONS OF THIS MODEL ARE AVAILABLE FOR DOWNLOAD AT RAPIDOTRAINS.COM. SHOULD YOU NOT BE ABLE TO LOCATE A SPECIFIC PART, PLEASE CONTACT US FOR ASSISTANCE.