

# RAPIDO TRAINS INC. N SCALE FL9 LOCOMOTIVE

Thank you for purchasing this model of the New Haven's unique locomotive, the EMD FL9. This is Rapido's first N scale locomotive model for the American market and we hope you enjoy it. We are always open to suggestions for improvement, so please don't hesitate to get in touch!

## WHERE IS THE SILENT DCC DECODER?

We are relatively new to N scale locomotives, and after we originally announced that the N FL9 would not be available as a straight DC model we heard from hundreds of you requesting that the silent model be DC only as most N scalers who order silent models do not have (or want) DCC. So we have decided to make the silent model DC only.

If you have a DCC layout and you would like a DCC decoder for your silent FL9, we apologize for this hassle. Enclosed in the box is a coupon for a free N scale Digitrax DZ126IN decoder. Please send us the coupon(s) with your contact details and we will send you a free decoder for each of your FL9 locomotives.

## WARRANTY INFORMATION

We stand by our products 100%. If you find anything wrong with your FL9, please get in touch by phone or email and we will do our best to fix it for you. Please do not send us your FL9 without speaking to us first.

If you damage your FL9, please get in touch as well. We will still try and fix your model even if the problem was your fault.

Your FL9 was tested at the factory on a Kato Unitrack layout, including through turnouts. It should have no problem handling Unitrack turnouts and 11" radius curves. Some brands of track (especially code 55) are notoriously fiddly. We can't guarantee that your FL9 will handle all brands of track and turnouts. If your FL9 shorts on your turnouts, we recommend playing with the wheelset spacing to find the "sweet spot" for your turnouts. We do not offer this service for you but information on how to adjust the wheelset spacing can be found in the Support section of our web site.

## BREAK IN

Your FL9 needs to be broken in. Run it around a test track for an hour or so in each direction to get the gears to mesh nicely. You should not need to add any more oil – just run it and you will be fine.

## GET IT RUNNING: DC LAYOUTS

The silent DC FL9 operates like any other DC locomotive model. The sound-equipped FL9 model will not start moving until the sounds fire up (approximately 7 volts).

Please note that using a cheap "train set" controller or an MRC 1300 with a sound-equipped FL9 will burn out the decoder. The maximum allowed voltage is 15V and cheap controllers and the MRC 1300 are known for causing voltage spikes of 20V or higher.

The warranty does not cover DCC sound decoder burn-outs caused by DC controllers.

## GET IT RUNNING: DCC LAYOUTS

The factory default address for your FL9 is 3.

The FL9 contains an ESU Select Micro decoder with our unique FL9 sounds and features. You need to press F8 to turn on the sound. Below is a full function list.

- F0 Headlights
- F1 Bell
- F2 Horn (Hancock Air Whistle)
- F3 Straight to 8
- F4 Dynamic Brake
- F5 Doppler Hancock
- F6 Steam Generator
- F7 Dimmer
- F8 Startup/Mute/Shutdown
- F11 Brake
- F12 Switching Mode
- F14 Grand Central Terminal Mode

If everything has gone potty, you can reset your FL9 to factory defaults. On your programming track, enter a value of 8 into CV 8.

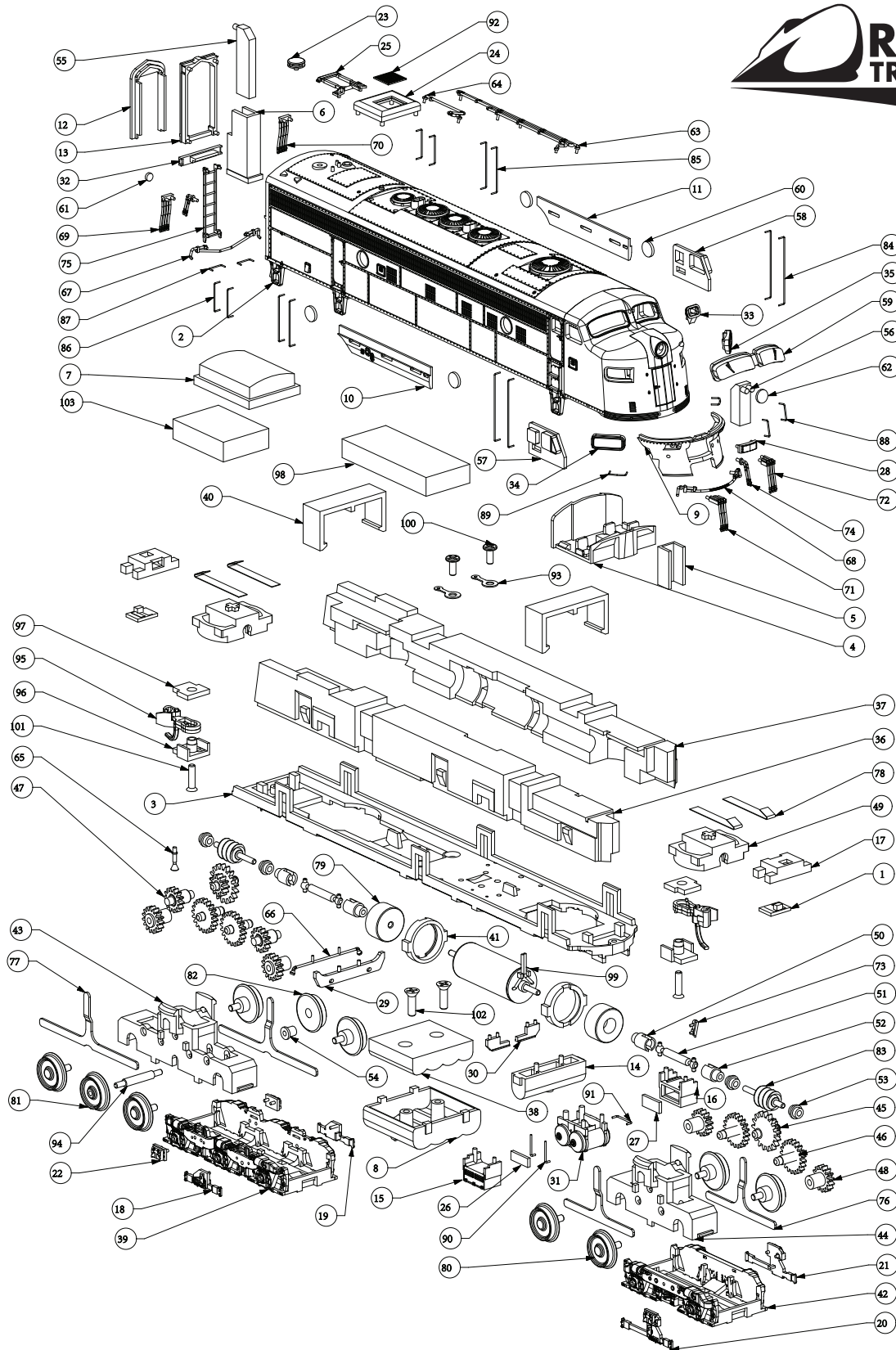
Please visit the Support section of our web site to learn more about how all of the functions work and for decoder CV programming information. There simply isn't enough room to explain it all here. If you do not have access to the internet and you would like us to mail you a printed copy of the full manual, please send a large SASE to PO Box 796, Higganum, CT, 06441.

Thank you again for buying this Rapido locomotive and we hope you will consider buying more Rapido products in future. Please visit our YouTube channel and Facebook page for more Rapido madness.



CANADA: 500 ALDEN ROAD, UNIT 21 • MARKHAM, ONTARIO • L3R 5H5  
USA: PO BOX 796 • HIGGANUM • CONNECTICUT • 06441  
Tel. 1-855-LRC-6917 • Fax. 1-905-474-3325 • Email. [trains@rapidotrains.com](mailto:trains@rapidotrains.com)

**RAPIDO**



100	SPRAKER	1
100	SCREW L AND ED	2
100	SCREW L AND ED	2
100	SCREW LOCK CM	2
99	MOTOR	1
98	DOOR	1
97	OCCUPIER COVER	1
96	OCCUPIER BOX	2
95	OCCUPIER	2
94	F-MOTOR	1
89	15-MTR05	2
88	15-MTR05	1
87	15-MTR05	2
86	15-MTR05	2
85	15-MTR05	2
84	15-MTR05	4
83	15-MTR05	2
82	15-MTR05	1
81	15-MTR05	1
80	15-MTR05	8
79	15-MTR05	2
78	15-MTR05	4
77	15-MTR05	2
76	15-MTR05	2
75	15-09-15	1
74	15-09-15	2
73	15-09-15	1
72	15-09-15	1
71	15-09-15	1
70	15-09-11	1
69	15-09-09	1
68	15-09-09	1
67	15-09-09	1
66	15-09-07	1
65	15-09-06	1
64	15-09-05	1
63	15-09-14	1
62	15-09-13	1
61	15-09-13	4
60	15-09-11	1
59	15-09-11	1
58	15-09-09	1
57	15-09-09	1
56	15-09-09	1
55	15-09-09	1
54	15-09-09	1
53	15-09-09	1
52	15-09-09	2
51	15-09-09	2
50	15-09-09	1
49	15-09-09	1
48	15-09-09	1
47	15-09-09	1
46	15-09-09	1
45	15-09-09	1
44	15-09-09	1
43	15-09-09	1
42	15-09-09	1
41	15-09-09	2
40	15-09-09	2
39	15-09-09	1
38	15-09-09	1
37	15-09-09	1
36	15-09-09	1
35	15-09-09	1
34	15-09-09	1
33	15-09-09	1
32	15-09-09	1
31	15-09-09	1
30	15-09-09	1
29	15-09-09	1
28	15-09-09	1
27	15-09-09	1
26	15-09-09	1
25	15-09-09	1
24	15-09-09	1
23	15-09-09	1
22	15-09-09	1
21	15-09-09	1
20	15-09-09	1
19	15-09-09	1
18	15-09-09	1
17	15-09-09	2
16	15-09-09	1
15	15-09-09	1
14	15-09-09	1
13	15-09-09	1
12	15-09-09	1
11	15-09-09	1
10	15-09-09	1
9	15-09-09	1
8	15-09-09	1
7	15-09-09	1
6	15-09-09	1
5	15-09-09	1
4	15-09-09	1
3	15-09-09	1
2	15-09-09	1
1	15-09-09	1
1	16-PCMS	2
PCNO	PART NUMS	QTY

# RAPIDO TRAINS INC. N SCALE FL9 - EDER-5

FOR DRAWINGS OF OTHER VERSIONS, PLEASE VISIT THE SUPPORT SECTION OF OUR WEB SITE.